



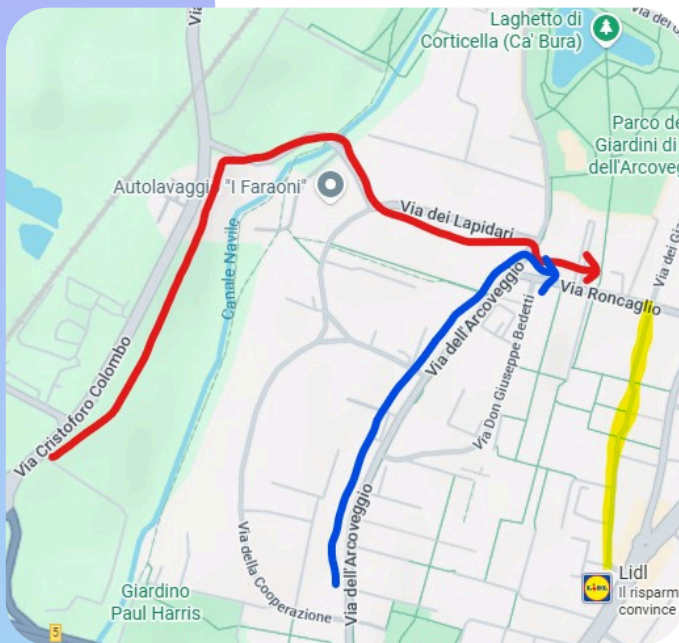
**POLISPORTIVA**  
CIRCOLO DOZZA



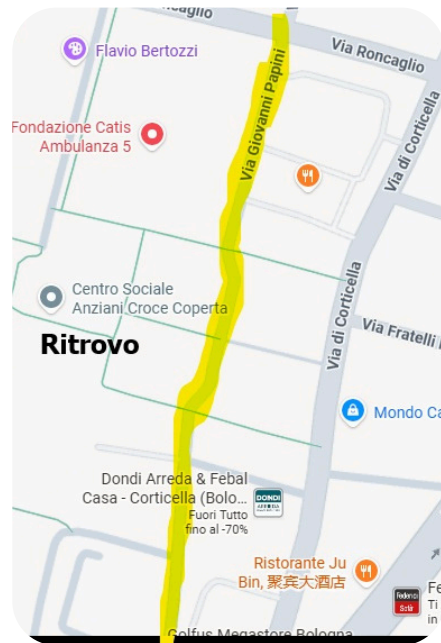
# Bulletin v1

**Traffic and parking:** due to several ongoing construction sites along Via di Corticella, we recommend accessing the parking area from Via Cristoforo Colombo or Via dell'Arcoveggio (see map 1), while parking is mandatory along Via Papini (see map 2).

Please note that parking spaces marked with blue lines are free on holidays.



map 1



map 2

**Race Center:** at Casa di quartiere Croce Coperta in Via Giovanni Papini, 28 in Bologna (44.53488641262558, 11.352361913688558) open from 9:00 am

**Bathrooms:** near race center

**Race type:** generous sprint race of 2 heats with a mandatory sequence and starting grid.



**Terrain type:** predominantly parks, with no vehicular traffic, bordered by largely accessible apartment buildings and city streets (paved), but with no significant elevation changes. Slightly lugged shoes are recommended for wet terrain.

**Race map:** Navile - Cà Bura – year 2025 (revised 2026) – Scale 1:4,000 – Equidistance 2.5 meters. The map is in A4 format, laser-printed on non-waterproof paper (80 gsm). Transparent protective envelopes will be available upon request for the start of the first run only. Reuse them for the second run.

**Payment:** Can be made directly at the office or by bank transfer to: POLISPORTIVA CIRCOLO DOZZA ASD BPER Ag. Bologna 7 – Via Riva Reno, 47/C

IBAN: IT07N0538702406000001142580

Mandatory reason for payment: orienteering competition – club  
XXXXXXXXXX

Send receipt of payment to [dozzaorienteering.bo@gmail.com](mailto:dozzaorienteering.bo@gmail.com)

**Start of the first run:** from 10:00 a.m. and 0.75 km away (9 minutes at a walking pace). The starting point can be reached using the map stamp found in the team envelope or at the race office. The start is based on a grid. Please arrive at least 2 minutes before the designated time. Due to limited space, please arrive early to avoid unnecessary crowding. The "punch-start" method is used, activated by touch. The starting triangle corresponds to the map drop-off point.

**Start of the second run:** from 12:00 and 0.25 km away (3 minutes at a walking pace), reachable by following the white and red ribbons. The start is based on a grid. Please arrive at least 2 minutes before the scheduled time. The "punching start" method is used, activated by touch. The starting triangle corresponds to the K-flag 70 meters (without a punch) from the map drop-off point (delayed start).





**Awards ceremony:** at the end of the event, approximately 2:00 PM. For competitive categories, the top three competitors will receive awards.

**Information:** available and updated on the FISO page (<https://www.fiso.it/gara/2026318>) or request by email at: [dozzaorientering.bo@gmail.com](mailto:dozzaorientering.bo@gmail.com)

