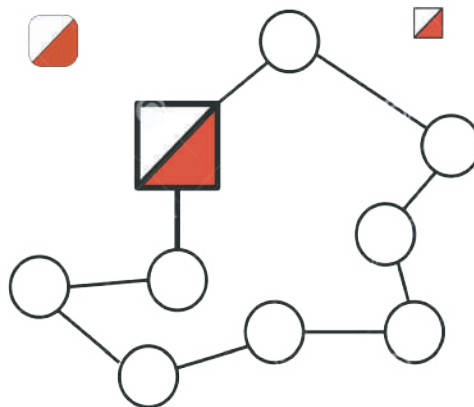
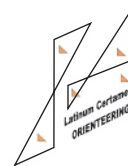




POLLINO ORIENTEERING BULLETIN 3



FEDERAZIONE
ITALIANA
SPORT
ORIENTAMENTO





FEDERAZIONE
ITALIANA
SPORT
ORIENTAMENTO



GENERAL INFORMATION

Organizing committee

Delegato Tecnico FISO:

IOF Event Advisor:

Coordinatore evento/event director:

Coordinatore logistico/logistics director:

Coordinatore tecnico/technical director:

Direttore di gara/race director:

Tracciatori/course setter:

Tracciatore training/course setter:

Controllori/controllers:

Cartografo/mapper:

Responsabile partenza/start:

Responsabile arrivo/finish:

Responsabile Centro Gara/event center director:

Segreteria/event office:

Elaborazione Dati/IT:

Pubbliche relazioni e promozione/public relations:

Rapporti internazionali/International relations:

Responsabile comunicazione/communications:

Addetto stampa/press officer:

Speaker:

Operatore drone/drone operator:

Francesco Giandomenico

Francesco Giandomenico

Sandro Passante

Angelo Napolitano

Armando Nuzzone

Tiziano Zanetello

Cristian Bellotto, Simone Grassi

Pietro Miracco

Valerio Pfister, Francesco Buselli, Armando Nuzzone,

Raffaele Micelli, Enrico Mele, Giovanni Izzi,

Pietro Miracco, Pino Di Tomaso

Francesco Buselli

Fulvio Lenarduzzi

Lorenzo Gecele

Sergio Senatore

Tina Lapenna, Maddalena Spingola

Daniele Guardini

Angelo Napolitano

Carmen Da Ros

Michele Capalbio

Massimo Nocito

Stefano Galletti

Antonello Viola

Organizing Teams

ASD Sportleader

Contatto: Sandro Passante, +39 3386548124

associazione@sportleader.it

ASD Estrema Outdoor

Contatto: Armando Nuzzone, +39 3334955550

associazione@estrema.net

Polisportiva Valle Argentino

Contatto: Angelo Napolitano, +39 3487261605

valleargentino@email.it

info@pollinorienteering.it

www.pollinorienteering.it

XXX COPPA DEI PAESI LATINI

PLAN POLLINORIENTEERING 2025

Wednesday, April 23th

9 am - 1 pm
2 pm - 5 pm

Accreditation-Event Center
Training middle

Catasta Pollino
Piano di Novacco

Thursday, April 24th

9 am - 1 pm
4 pm - 6 pm
4 pm - 5 pm
6 pm - 8 pm

Accreditation
Accreditation
Opening ceremony (parade)
Training sprint

Catasta Pollino
Mormanno
Mormanno
Mormanno (town centre)

Friday, April 25th

11 pm
12 pm
2 pm
5 pm
5.30 pm - 6 pm
7 pm - 9 pm

Long WRE
Meeting point, event office
First start
Last start
Race closed
Prize-giving
Annual meeting CPL 2025

Piano di Masistro
Masistro Park

Catasta Pollino
Catasta Pollino

Saturday, April 26th

9 am
10 am
11 am
12.00 pm
12.30 pm

Sprint WRE
Meeting point, event office
First start
Last start
Race closed
Prize-giving

Rotonda (town centre)
Municipal park

Sunday, April 27th

8 am
9 am
11 am
13 pm
13.30 pm
3 pm
4 pm

Middle WRE
Meeting point, event office
First start
Last start
Race closed
Prize-giving
Final prize-giving CPL
Closing ceremony

Piano Pedarreto
Fasanelli Refuge

Pollino Park Authority
Pollino Park Authority



INFORMATION RACE

RACE

25/04/2025 ITALIAN CUP LONG CPL

LOCATION Masistro Park

MAP Piano di Masistro, Scala 1:15.000, eq. 5 m, 2024

AGGIORNAMENTO Francesco Buselli

COURSE SETTER Cristian Bellotto

TERRAIN

Is characterized by vast and majestic old beech forests, generally steep terrain with few flat areas, with many boulders of all sizes as well as rock features, but with a fairly clean undergrowth, which allows good visibility.



26/04/2025 SPRINT WRE CPL

LOCATION Rotonda

MAP Rotonda, scala 1:4000, eq. 2,5 m

MAPPER Francesco Buselli

COURSE SETTER Simone Grassi

TERRAIN

The terrain is urban, about 600 m above sea level.

The athletes will have to face a part of the race in the flat area of the town, with parks, open spaces, residential areas and roads open to traffic.

One part, however, is characterized by stone stairs, narrow and steep alleys that cross the historic center leading to the remains of the castle, on top of the rocky hill on which the town is based.

Pay maximum attention to road traffic and respect the rules of the road code

For some classes there will be a map exchange (second part printed on the back).



27/04/2025 ITALIAN CHAMPIONSHIP WRE CPL MIDDLE

LOCATION Piano Pedarreto

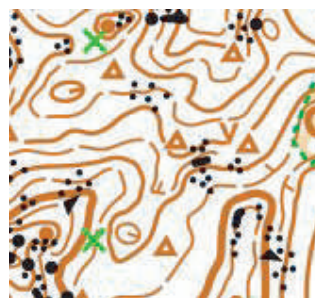
MAP Piano Pedarreto, scala 1:10000, eq 5 m

MAPPER Francesco Buselli

COURSE SETTER Cristian Bellotto

TERRAIN

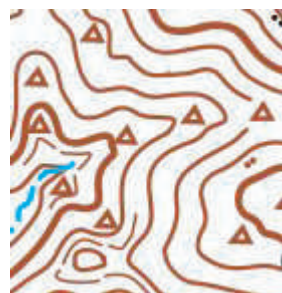
Is characterized by vast and majestic old beech forests, generally steep terrain with few flat areas, with many boulders of all sizes as well as rock features, but with a fairly clean undergrowth, which allows good visibility..



Training Maps:

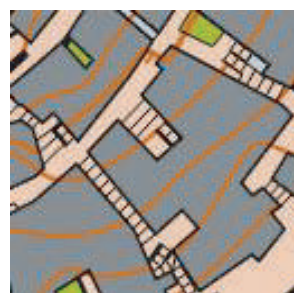
Piano di Novacco

Scala 1:15.000, eq. 5 m, 2024, agg. Francesco Buselli



Mormanno

Scala 1:3000, eq. 2,5 m, 2024, cart. Francesco Buselli



Catasta Pollino

Contrada Campotenese, SS 19

87016 Morano Calabro (CS)

Coord.: 39.874634, 16.06534

The Event Center is the location for:

- Accreditation
- Information point
- Team official's meeting
- Annual CPL meeting



FROM THE EVENT CENTER

Rotonda	Km 14
Masistro	Km 9
Piano Pedarreto	Km 19
Mormanno	Km 9
Novacco	Km 9
Aeroporto Lamezia Terme	Km 148
Aeroporto di Napoli	Km 229
Aeroporto di Brindisi	Km 265
Aeroporto di Bari	Km 255

EVENT CENTER

To reach Catasta Pollino by car, exit the E45 motorway at Campotenese

ARENA MASISTRO



ARENA

*The arena is km 9 from the Event Center Catasta Pollino
Meeting point and event office is the Masistro Park
(39.82 820 - 16.04 167)*

START

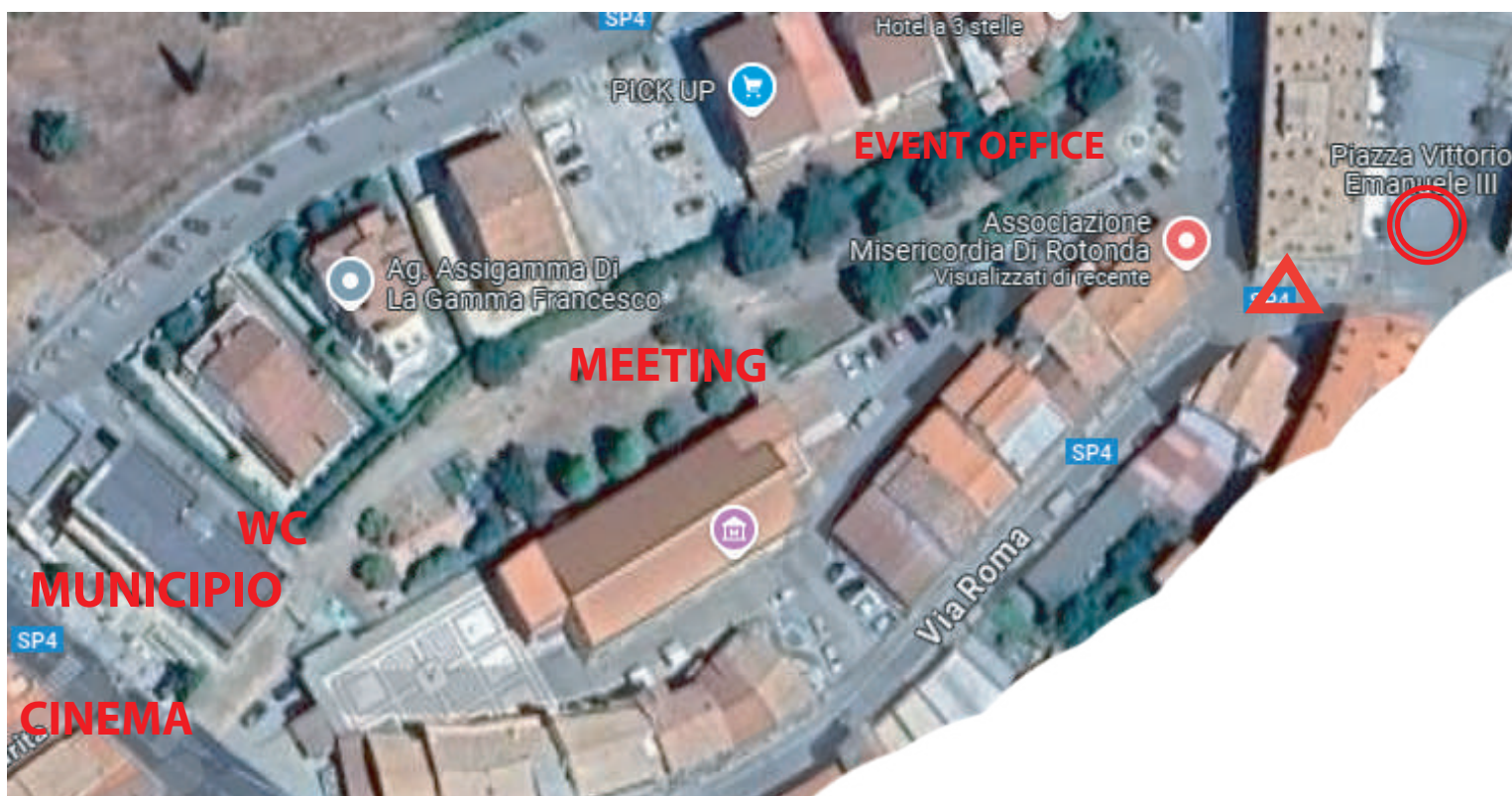
The start is 10 minutes walk from the arena

SCALE: 1:15000, eq.. 5 m for M/W 20 - M/W ELITE
1:7500 until M/W 14 and above M/W 50
1:10000 all other classes

There will be three refreshment points on the longer courses

The buses will stop at the Catasta Pollino parking lot, from where the shuttle service to Masistro Park will depart; the cars can go up to the Masistro Park parking lot.

ARENA ROTONDA



ARENA

The arena is 1,6 km from the Pollino Park Authority car park
Meeting point event office in the municipal park
(39.953907 - 16.038366)

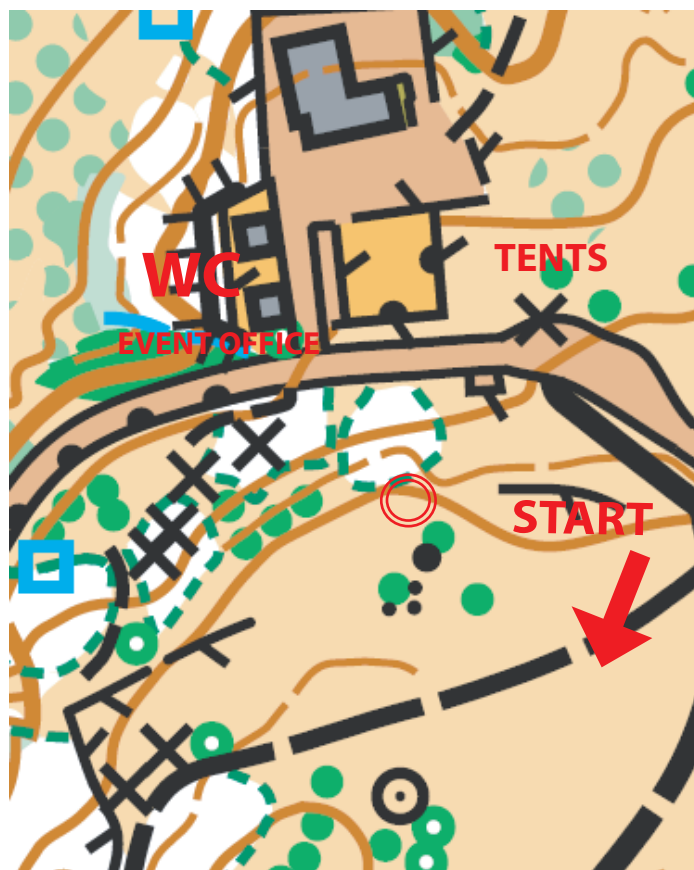
START

The start in the arena

SCALE: 1:4000, eq. 2,5 m for M/W Elite
1:3000, eq. 2,5 m for all other classes

To reach the meeting point in the municipal park, the athletes, leaving their cars and buses at the Pollino Park Authority parking lot, will travel along Corso Garibaldi (SP 28), via delle Freccie Tricolori and via Roma to the City Park.

ARENA PIANO PEDARRETO



ARENA

The arena is km 19 from the Event Center Catasta Pollino and km 10 from Rotonda

*Meeting point and event office at the Fasanelli Refuge
(39.91780 - 16.09602)*

START

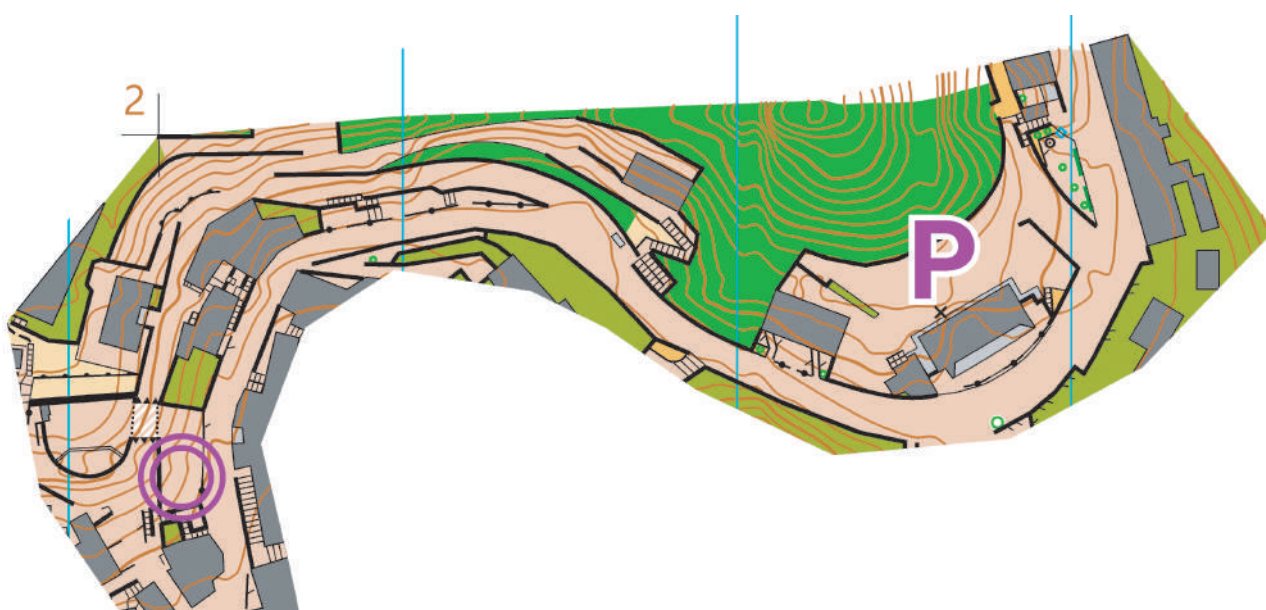
The start is 30 minutes iwalk from the arena: 2 km + 150 m

SCALE: 1:10000, eq.. 5 m, for M/W 20 - M/W ELITE
1:7500, eq. 5 m, for all other classes

The buses will stop at the Ente Parco parking lot, from where the shuttle service to the Fasanelli Refuge will depart; the cars will go up to the Fasanelli Refuge, parking along the roadway: for the return they will turn around in the clearing in front of the Refuge or continue along the road to the Cappella Madonna del Carmine, and then take the SP 127 to Rotonda or to Catasta Pollino.

XXX COPPA DEI PAESI LATINI

ARENA MORMANNO



Arrive: Large square Roma street - Scesa Porta Laino street

Scale: 1:3000, eq. 2,5 m

CATASTA POLLINO PARKING



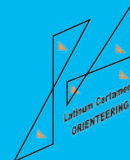
XXX COPPA DEI PAESI LATINI

ROTONDA PARKING





FEDERAZIONE
ITALIANA
SPORT
ORIENTAMENTO



ENTRIES

The registration deadline is at 23:59 of Sunday April 20th 2025

All competitions are classified WRE races, therefore athletes of M/W Elite classes must enter only through IOF Eventor website:

<https://eventor.orienteering.org/Events>

In all other classes, Italian athletes must enter only by the FISO website; international athletes can enter via the online form published at this address:

<https://forms.gle/NRmMdEPiKz6iZqM28>

Italian athletes (M/W Elite included) can enter to Training via FISO website; international athletes (M/W Elite incl.) can use the online form as above.

Maps can be collected from Event Center Catasta Pollino at a cost of € 1 for each map.

A 50% increase in the registration fee will be applied after the deadline.

BIBS

Athletes are advised to carry safety pins.

SI-CARD

It is possible to rent SI-CARD at the price of 2€ per day: the SI-CARD will be collected after the last race.

In case of loss, the cost charged will be 50€.

REFRESHMENT

At the end of each race there is refreshment point is provided.

In Masistro's long race there are 3 refreshment point on the terrain of the longer courses.

CATERING

At the Catasta Pollino Event Center is a refreshment point with a self service restaurant.

Athletes and companions, upon delivery of vouchers (two for each athlete, to be collected at the event center or event office) will receive a 25% discount on the cost of the menu.

The Baita dei Faggi Restaurant in Piano di Novacco is open to athletes and companions on April 25 th (only after the race has concluded), 26 and 27, by reservation at no. +39 3472993543 Mrs Silvia.

CAMPING AREA

Area equipped for campers and tents, located about 3 km from Rotonda

website: escursioninelpollino.it info and reservations +39 3293421603 Carlo Marsico.

XXX COPPA DEI PAESI LATINI

LUNGHEZZA DEI PERCORSI

Coppa Italia WRE LC 2025 Long

Course	Controls	Length	Climb
M10 W10	11	2,0 km	80
M12 W12 Eso	10	2,0 km	90
W14 WC	11	2,9 km	130
M14 MC	11	3,0 km	150
M75 W75 W70	11	3,5 km	160
M70 M65 W65 W60	12	4,0km	180
W50 W55 Direct	15	4,4 km	230
M60 W16 WB	16	4,8 km	245
M55 M16 W45 W40 MB	17	5,6 km	355
M50 W35 W18 WA	18	6,1 km	370
M45 M18 MA	21	7,4 km	460
M40 W20	19	8,0 km	425
M20 WE M35	24	9,2 km	485
ME	29	11,7km	590

WRE LC 2025 Sprint

Course	Controls	Length	Climb
ME	22	3.2 km	105
WE	21	2.7 km	90
M10 W10	11	1.3 km	15
M12 W12 ESO	11	1.5 km	15
M14 W14	12	1.7 km	25
M16 W16	15	2.2 km	70
M35	21	2.5 km	85
W18 W20	18	2.1 km	75
M18 M20	21	2.4 km	90
M40 M45	14	2.3 km	80
M50 M55	14	2.0 km	75
W35 W40 M60	16	1.9 km	70
M65 M70 MB	15	1.8 km	65
W45 W50	12	1.8 km	65
W55 W60 W65 WB	10	1.7 km	60
W70 W75 M75	9	1.6 km	60
DIRECT	15	2.2 km	70

Campionato Italiano WRE LC 2025 Middle

Course	Controls	Length	Climb
M10 W10	8	1,4 km	15 m
M12 W12 Eso	9	1,7 km	30 m
W14 WB	10	2,4 km	80 m
M14 MB	11	2,6 km	80 m
M75 W75 W70	12	2,5 km	70 m
M70 M65 W60 W65	14	2,8 km	105 m
M60 W55 Direct	13	3,1 km	130 m
W50 W16	12	3,4 km	170 m
M55 M16 W45 W40	17	3,5 km	165 m
M50 W18 W35	16	3,7 km	190 m
M45 M18	18	3,9 km	205 m
M40 W20	16	4,4 km	240 m
M35 M20 WE	17	4,5 km	200 m
ME	18	5,1 km	275 m