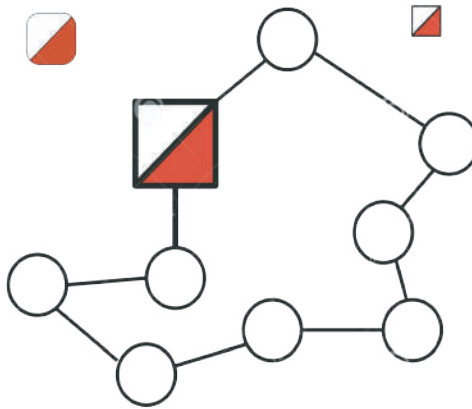
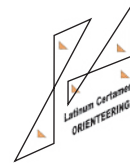




POLLINO
ORIENTEERING
BULLETIN 2



FEDERAZIONE
ITALIANA
SPORT
ORIENTAMENTO





FEDERAZIONE
ITALIANA
SPORT
ORIENTAMENTO



GENERAL INFORMATION

Organizing committee

Delegato Tecnico FISO:

IOF Event Advisor:

Coordinatore evento/event director:

Coordinatore logistico/logistics director:

Coordinatore tecnico/technical director:

Direttore di gara/race director:

Tracciatori/course setter:

Controllori/controllers:

Cartografo/mapper:

Responsabile partenza/start:

Responsabile arrivo/finish:

Responsabile Centro Gara/event center director:

Segreteria/event office:

Elaborazione Dati/IT:

Pubbliche relazioni e promozione/public relations:

Rapporti internazionali/International relations:

Responsabile comunicazione/communications:

Addetto stampa/press officer:

Speaker:

Operatore drone/drone operator:

Francesco Giandomenico

Francesco Giandomenico

Sandro Passante

Angelo Napolitano

Armando Nuzzone

Tiziano Zanetello

Cristian Bellotto, Simone Grassi,

Francesco Buselli, Pietro Miracco

Valerio Pfister, Francesco Buselli, Armando Nuzzone,

Raffaele Micelli, Enrico Mele, Giovanni Izzi,

Pietro Miracco, Pino Di Tomaso

Francesco Buselli

Fulvio Lenarduzzi

Lorenzo Gecele

Sergio Senatore

Tina Lapenna, Maddalena Spingola

Daniele Guardini

Angelo Napolitano

Carmen Da Ros

Michele Capalbio

Massimo Nocito

Stefano Galletti

Antonello Viola

Organizing Teams

ASD Sportleader

Contatto: Sandro Passante, +39 3386548124

associazione@sportleader.it

ASD Estrema Outdoor

Contatto: Armando Nuzzone, +39 3334955550

associazione@estrema.net

Polisportiva Valle Argentino

Contatto: Angelo Napolitano, +39 3487261605

valleargentino@email.it

info@pollinorienteering.it

www.pollinorienteering.it

XXX COPPA DEI PAESI LATINI

PLAN POLLINORIENTEERING 2025

Wednesday, April 23th

9 am - 1 pm

2 pm - 5pm

Accreditation-Event Center

Training middle

Catasta Pollino

Piano di Novacco

Thursday, April 24th

9 am - 1 pm

4 pm - 6 pm

4 pm - 5 pm

6 pm - 8 pm

Accreditation

Accreditation

Opening ceremony (parade)

Training sprint

Catasta Pollino

Mormanno

Mormanno

Mormanno (historic center)

Friday, April 25th

11 pm

12 pm

2 pm

5 pm

5.30 pm - 6 pm

7 pm - 9 pm

Long WRE

Meeting point, event office

First start

Last start

Race closed

Prize-giving

Annual meeting CPL 2025

Piano di Masistro

Masistro Park

Catasta Pollino

Catasta Pollino

Saturday, April 26th

9 am

10 am

11 am

12.00 pm

12.30 pm

Sprint WRE

Meeting point, event office

First start

Last start

Race closed

Prize-giving

Rotonda (historic center)

Municipal park

Sunday, April 27th

8 am

9 am

11 am

13 pm

13.30 pm

3 pm

4 pm

Middle WRE

Meeting point, event office

First start

Last start

Race closed

Prize-giving

Final prize-giving CPL

Closing ceremony

Piano Pedarreto

Fasanelli Refuge

Pollino Park Authority

Pollino Park Authority



FEDERAZIONE
ITALIANA
SPORT
ORIENTAMENTO



CLASSES AND ENTRY FEES

Friday April 25, Long WRE

Italian Cup - CPL

Non competitive classes:

M/W10,beginners, Direct

Competitive classes:

M/W12,M/W14,M/W16,M/W18,M/W20,
M/WElite,M/W35,M/W40,M/W45,M/W50,M/W55,
M/W60,M/W65,M/W70,M/W75,M/WA,M/WB,M/WC

Saturday April 26, Sprint WRE - CPL

Non competitive classes:

M/W10,Beninners ,Direct

Competitive classes:

M/W12,M/W14,M/W16,M/W18,M/W20,
M/WElite,M/W35,M/W40,M/W45,M/W50,M/W55,
M/W60,M/W65,M/W70,M/W75,M/WB

Sunday April 27, Middle WRE

Italian Championship - CPL

Non competitive classes:

M/W10,Beninners,Direct

Competitive classes:

M/W12,M/W14,M/W16,M/W18,M/W20,M/WElite,
M/W35,M/W40,M/W45,M/W50,M/W55,M/W60,
M/W65,M/W70,M/W75,M/WB

Classes for CPL official teams

M/WSenior, M/WJunior (born in 2005 or lather),
M/W Cadets (born in 2007 or lather)

Entry fees for each race:

M/W10,M/W12,M/W14,M/W16,M/W75

Beninners,Direct: € 7

Other classes: € 15 (bosco), € 12 (sprint)

No fee is due for CPL official teams

XXX COPPA DEI PAESI LATINI



FEDERAZIONE
ITALIANA
SPORT
ORIENTAMENTO



ENTRIES

The registration deadline is at 23:59 of **Sunday April 20th 2025**

All competitions are classified WRE races, therefore athletes of M/W Elite classes must enter only through IOF Eventor website:

<https://eventor.orienteering.org/Events>

In all other classes, Italian athletes must enter only by the FISO website; international athletes can enter via the online form published at this address:

<https://forms.gle/NRmMdEPiKz6iZqM28>

Italian athletes (M/W Elite included) can enter to Training via FISO website; international athletes (M/W Elite incl.) can use the online form as above.

Maps can be collected from Event Center Catasta Pollino at a cost of € 1 for each map.

PAYMENT

Entry fees must be paid only by bank transfer to:

Cod.Bic: ETICIT22XXX

Iban: IT38V0501803400000012500831

Bank: BANCA ETICA Napoli

Name: Polisportva Valleargentino ASD

Reason: Pollinorienteering 2025 entry fees

Summary of fees for each club will be upload online after the entries deadline: please wait and check the amount before payment.

Please send the payment receipt to:

info@pollinorienteering.it

XXX COPPA DEI PAESI LATINI

INFORMATION RACE

RACE

25/04/2025 ITALIAN CUP LONG CPL

LOCATION Masistro

MAP Piano di Masistro, Scala 1:10.000, eq. m5, 2024

AGGIORNAMENTO Francesco Buselli

COURSE SETTER Cristian Bellotto

TERRAIN

Masistro

Is characterized by vast and majestic old beech forests, generally steep terrain with few flat areas, with many boulders of all sizes as well as rock features, but with a fairly clean undergrowth, which allows good visibility.



26/04/2025 SPRINT WRE CPL

LOCATION Rotonda

MAP Rotonda, scala 1:3000, eq. 2,5 m

MAPPER Francesco Buselli

COURSE SETTER Simone Grassi

TERRAIN

The terrain is urban, about 600 m above sea level.

The athletes will have to face a part of the race in the flat area of the town, with parks, open spaces, residential areas and roads open to traffic.

One part, however, is characterized by stone stairs, narrow and steep alleys that cross the historic center leading to the remains of the castle, on top of the rocky hill on which the town is based.

Pay maximum attention to road traffic and respect the rules of the road code

For some classes there will be a map exchange (second part printed on then back).



27/04/2025 ITALIAN CHAMPIONSHIP WRE CPL MIDDLE

LOCATION Piano Pedarreto

MAP Piano Pedarreto, scala 1:10000, eq 5m

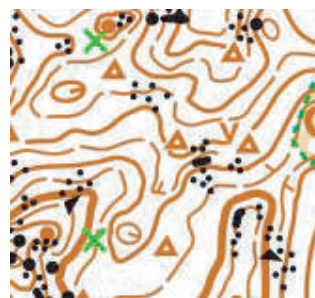
MAPPER Francesco Buselli

COURSE SETTER Cristian Bellotto

TERRAIN

Piano Pedarreto

Is characterized by vast and majestic old beech forests, generally steep terrain with few flat areas, with many boulders of all sizes as well as rock features, but with a fairly clean undergrowth, which allows good visibility..



Training Maps:

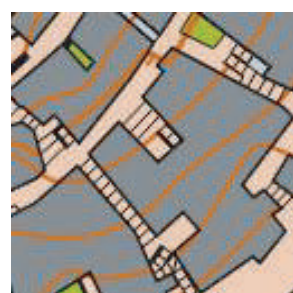
Piano di Novacco

Scala 1:10.000, eq. m5, 2024, agg. Francesco Buselli



Mormanno

Scala 1:10.000, eq. m2,5, 2024, cart. Francesco Buselli



EVENT CENTER

Catasta Pollino

Contrada Campotenesse, SS 19

87016 Morano Calabro (CS)

Coord.: 39.874634, 16.06534

The Event Center is the location for:

- Accreditation
- Information point
- Team official's meeting
- Annual CPL meeting



DISTANCE HISTORY RACE

Rotonda	Km 14
Masistro	Km 9
Piano Pedarreto	Km 19
Mormanno	Km 9
Novacco	Km 9
Aeroporto Lamezia Terme	Km 148
Aeroporto di Napoli	Km 229
Aeroporto di Brindisi	Km 265
Aeroporto di Bari	Km 255

ACCOMODATION

To book accomodation:

I VIAGGI DELL'ARCA – Tour Operator info@iviaggidellarca.it +39 3288278737

VISA PERMITS

The prerequisite for immigration into Italy is a valid passport.

For travellers from certain countries, a visa or further documents are required.

Further information on the site:

www.pollinorienteering.it



FEDERAZIONE
ITALIANA
SPORT
ORIENTAMENTO



COPPA DEI PAESI LATINI POLLINORIENTEERING 2025

CPL Official Teams nominal entry form NAZIONE _____

Cat.	COMPETITOR	N° Passport	SPORTident	Birthday
W Cadet.				
M Cadet.				
W Junior				
M Junior				
W Senior				
M Senior				
Accomp.				
Accomp.				

ISCRIZIONI / ENTRIES

<https://forms.gle/NRmMdEPiKz6iZqM28>

<https://eventor.orienteeing.org/Events>

Inviare il modulo compilato a Josè Angel Nieto Poblete, Presidente CPL
janietopo@gmail.com

Federazione Italiana Sport Orientamento
info@fiso.it

info@pollinorienteering.it

DATA DI ARRIVO / ARRIVAL DATE _____

ORA APPROSSIMATIVA / APPROXIMATE TIME _____

DATA DI PARTENZA / DEPARTURE DATE _____

ORA APPROSSIMATIVA / APPROXIMATE TIME _____

TERMINE ISCRIZIONI / DEADLINE ENTRIES:

The registration deadline is at 23:59 **Sunday April 20th 2025**

XXX COPPA DEI PAESI LATINI

LENGTH OF THE RACES

Italian Cup WRE LC 2025 Long

Course	Controls	Length	Climb
M10 W10	11	2,0 km	30
M12 W12 Eso	10	2,0 km	40
W14 WC	12	2,6 km	60
M14 MC	11	3,0 km	70
M75 W75 W70	13	3,6 km	140
M70 M65 W65 W60	15	4,1 km	170
M60 W55 Direct	15	4,4 km	190
W50 W16 WB	17	4,8 km	210
M55 M16 W45 W40 MB	18	5,6 km	250
M50 W35 W18 WA	19	6,4 km	280
M45 M18 MA	22	7,4 km	300
M40 W20	20	8,1 km	350
M20 WE M35	25	9,2 km	400
ME	31	11,8km	600

WRE LC 2025 Sprint

Course	Controls	Length	Climb
ME	22	3.2 km	105
WE	21	2.7 km	90
M10 W10	11	1.3 km	15
M12 W12 ESO	11	1.5 km	15
M14 W14	12	1.7 km	25
M16 W16	15	2.2 km	70
M35	21	2.5 km	85
W18 W20	18	2.1 km	75
M18 M20	21	2.4 km	90
M40 M45	14	2.3 km	80
M50 M55	14	2.0 km	75
W35 W40 M60	16	1.9 km	70
M65 M70 MB	15	1.8 km	65
W45 W50	12	1.8 km	65
W55 W60 W65 WB	10	1.7 km	60
W70 W75 M75	9	1.6 km	60
DIRECT	15	2.2 km	70

Campionato Italiano WRE LC 2025 Middle

Course	Controls	Length	Climb
M10 W10	8	1,4 km	15 m
M12 W12 Eso	9	1,7 km	30 m
W14 WB	10	2,4 km	80 m
M14 MB	11	2,6 km	80 m
M75 W75 W70	12	2,5 km	70 m
M70 M65 W60 W65	14	2,8 km	105 m
M60 W55 Direct	13	3,1 km	130 m
W50 W16	12	3,4 km	170 m
M55 M16 W45 W40	17	3,5 km	165 m
M50 W18 W35	16	3,7 km	190 m
M45 M18	18	3,9 km	205 m
M40 W20	16	4,4 km	240 m
M35 M20 WE	17	4,5 km	200 m
ME	18	5,1 km	275 m

EVENT CENTER

Wednesday 23th April and Thursday 24th April the Event Center will be located at Catasta Pollino. On the competition days the Event Center will be at the competition site.

STARTING GRIDS AND RESULTS

Starting grids and results LIVE are available at the arena and on website
<https://app.liveresults.it/latinumcertamen2025>

BIBS

Each registered competitor will be assigned a bib, on which the starting time of each race will be indicated. The bibs must be collected by the teams at the secretariat of the Event Center Catasta Pollino or race arenas. It is advisable to write medical information useful in case of emergency on the back of the bib.

MAP PRINTING

All the race maps are printed in the format A4 using CMYK digital printing on blueback paper, their is no feed for a plastic bag.

CONTROL DESCRIPTION

Available at the start and on the map.



FEDERAZIONE
ITALIANA
SPORT
ORIENTAMENTO



TIMING AND PUNCHING SYSTEM

All classes will use the Sport-ident punching system; the touch-free Air+ method will be activated. There are no SIAC available for renting: only classical Sicards can be rented.

In the case of a nonfunctioning station, manual punching on your map is required.

CHANGE OF SICARD/SIAC

Please notify the event office of any changes to your Sicard/SIAC, before of your start: the change is free of charge.

GPS

Live tracking will be available for the MW Elite classes at the Event Center Masistro secretariat.

Athletes Elite in all races must be prepared to carry a GPS tracker. The device will be carried on the back of the athlete in an elastic harness. For hygiene reasons, all athletes should bring their own harness. If necessary, the harness will be available at the secretariat. The GPS locator must be returned at the end of the long race at the race secretariat (Rifugio Fasanelli).

LATE STARTER

Competitors who are late at the start must report to the official and follow the different procedures (checking of the bib number and collecting the control descriptions list).

They must wait for the start official to let them take their maps and start their competition.

Starting times of the late competitors will only be altered if lateness is due to the organizer, otherwise they remain unchanged from those on the start list.

MAPS AFTER THE FINISH

In forest races competitors are allowed to keep their map after the finish, instead at the end of the sprint race the map will be deposited in the team bag. The team leader will be able to collect the bag with the maps after the last start.

We ask you to respect the principles of fair play and not to show the map to a competitor who has not yet started.

WITHDRAWALS AND MAXIMUM TIME

I concorrenti che intendono ritirarsi dovranno oltrepassare il traguardo (spegnendo il SIAC).

Il tempo massimo è di 3 ore per la prima gara, di 1 ora per la seconda e di 2 ore per la terza.

Dopo 3, 2 e 1 ora rispettivamente dall'ultima partenza, i punti di controllo saranno ritirati.

REFRESHMENT

At the end of each race there is a refreshment point. On the first day there are 2 refreshment points on the terrain of the longer courses.



FEDERAZIONE
ITALIANA
SPORT
ORIENTAMENTO



PRIZE GIVING CEREMONY

At the end of each race there will be the day's prize giving ceremony.

That of the first race will be held at the Catasta Pollino Event Center, the other two will be held at the race arena.

In the prize giving ceremony of the day, the first 6 athletes classified in the MW21E class will be awarded, the first 3 athletes classified in other classes and for the CPL the first 3 athletes classified in the MW Cadet, MW Junior and MW Senior classes.

In the SPRINT race, in case of rainy weather, the prize-giving will be held in the Cinema-Theatre in Rotonda. A certificate of participation will be given by the Secretariat to athletes registered in the MW10, Beginners and Direct classes.

A pennant as a souvenir of the event will be given to the Clubs with at least 5 registered athletes.

In the final prize giving ceremony of the CPL, which be held at the headquarters of the Pollino Park Authority, the XXX Latin Countries

Cup will be awarded to the first classified official team, plaques and diplomas to the other official teams.

At the end of prize giving ceremony, closing ceremony of the Latinum Certamen.

RACE JURY

Race Jury for all the competitors in a following bulletin.

RULES

The event will be judged according to the IOF, FISO and the Latin Countries Cup.

COMPLAINTS

Complaints must be submitted to the race secretariat and addressed to the race Director, which will manage them in accordance with par.3.7 of the RTF FISO.

No complaints will be accepted over 30' from the officialization of the rankings.

FIRS AID

Medical assistance with ambulance is provided at the start and finish.

If you regularly take medication or have any high-risk allergies (to medication or to insect bites), please inform the race doctor and take your life-saving medication with during the race.

On the back of the bib you may provide clinical information useful in case of rescue.

Finally, we remind you that if you notice someone who needs assistance, you must stop your race and provide assistance.

TRAININGS

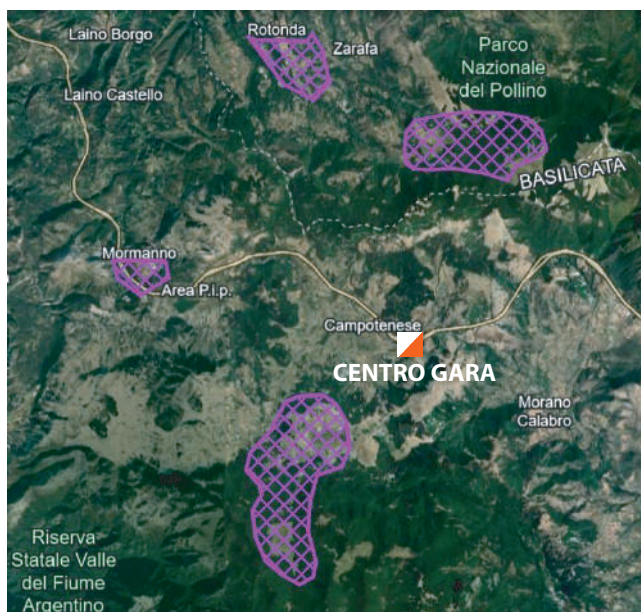
There are two trainings and they are autonomous: only the controls flags will be set in the terrain and the printed maps with the description of the control points can be collected at the Event Center Catasta Pollino at a cost of 1 euro each.

XXX COPPA DEI PAESI LATINI

DANGEROUS AND FORBIDDEN AREAS

Some areas are marked on the map and/or the terrain as forbidden. For your own safety as well as for the preservation of vulnerable natural sites and the environmental sustainability of orienteering it is mandatory to comply with these prohibition, under penalty of disqualification.

AREE EMBARGATE



CAMPING

Camping is forbidden throughout Piano Pedarreto and Masistro-Novacco. On race days, cars and campers will only be able to park in established parking areas. Tents are only allowed in the arenas.

ANTI-DOPING

Doping is forbidden. The organizers are dedicated to supporting the Anti-Doping authorities in their work. The IOF Anti-Doping de 2021 is apply. Doping controls may be carried out at any time during the competitions in accordance with the procedures described in the WADA International Standard of Testing and Investigations.

Athletes who are selected for doping control must bring an official identification with a photo to the doping test area. The athlete should also present the personal therapeutic use exemption (TUE) if applicable. It is the responsibility of the competitors to obtain any required TUE (therapeutic use exemption) certificate (§26.3). Further information on IOF Anti-Doping web page.

INSURANCE

The organisers decline any liability that might occur through participation in the races and related trainings. Each person participates at their own risk and is responsible for their own insurance coverage (illness and accident).

CLIMATE

The climate on Pollino in April is moderately cool and windy, with an average daily temperature ranging between 7°C and 15°C. The average precipitation is 43 mm. On race days the sun rises at 6.03 and sets at 19.43.



FEDERAZIONE
ITALIANA
SPORT
ORIENTAMENTO



CATERING

At the Catasta Pollino Event Center there is a refreshment point with a self service restaurant. Athletes and companions, upon presentation of their race bib or list of clubs, will receive a 25% discount on the cost of the menu, which can be viewed on the catastapollino.com website.

PARKING

Friday 25th April parking at Event Center Catasta Pollino (39.88045, 16.06376) and Masistro Park (39.82820, 16.04167);

Saturday 26th April parking at the Pollino Park Authority in Rotonda;

Sunday 27th April parking at the Pollino Park Authority in Rotonda and Rifugio Fasanelli (39.91730, 16.09605).

Due to traffic problems, access to the car parks for the forest races is only permitted for cars, minibuses and campers. Teams that intend to use coaches will be able to use, upon communication to the organization by 10th April, the free shuttle service from the parking area established for coaches (Event Center Catasta Pollino and Pollino Park Authority) to the competition arena.

WC

Toilets are located in the meeting area.

FREE TIME

Enjoy the time between races; the area offers countless services for lovers of outdoor sports and authentic experiences (upon registration): adventure park (Masistro Park), cycle tourism (Masistro Bike), trekking (Masistro Park), speleological excursion (Masistro Park), food and wine experience (Masistro Park), rafting, river trekking, climbing, paragliding, visits to the villages (I Viaggi dell'Arca).

PRESCRIPTIONS

At the finish, in the parking area, in any part of the field, the organizers and the foresters strictly forbids smoking, building fires and the use of open flames.

Respect the environment and do not abandon waste in the woods, which must be separated into the respective containers.

Do not enter the competition field. It is permitted to pitch tents only in the areas established by the organization; leave bags and personal effects exclusively in the meeting area, especially in the sprint race. Pay maximum attention to vehicle and pedestrian traffic

INFORMATION

By registering, competitors agree that pictures and video recordings taken at the competition may be published in the printed and electronic media, including the Internet, unless otherwise stated in writing.

The organizers recommend that participants check their health at a healthcare facility before taking part in the competition. By registering, teams, coaches and athletes confirm that they have undergone a health check, are aware of the potential risks to life and health, and assume full responsibility for participation, including risks of health complications. They also agree not to hold the organizers liable for any related issues.

NOTE
in Bulletin 3 will be published:
the competition arenas - the scale of the competition maps - the composition of the Jury

XXX COPPA DEI PAESI LATINI