

BULLETIN 1



FEDERAZIONE
ITALIANA
SPORT
ORIENTAMENTO

October 21st, 2023
ITALIAN CUP
SPRINT distance

****World Ranking Event****
Bolzaneto (Genova)



October 22nd, 2023
ITALIAN RELAY
CHAMPIONSHIPS

Piani di Praglia (Ge)



GENERAL INFORMATION

PROGRAMME

Saturday 21st October – ITALIAN SPRINT CUP (final round) – Genova Bolzaneto
[44.458661, 8.901441](#)

13.00 race office opens
15.00 first start
18.00 prize giving ceremony

Sunday 22nd October – ITALIAN RELAY CHAMPIONSHIPS – Piani di Praglia
[44.51700, 8.80417](#)

08.30 race office opens
10.00 first start
14.00 prize giving ceremony

ORGANISING COMMITTEE

info@woc2026.it

Event director: Gianluca Carbone
gianluca.carbone@woc2026.it / +393356966752

IOF Event Adviser: Simone Grassi (sprint)
FISO Event Adviser: Ivano Benini
Race Director: Aaron Gaio (sprint)
Andrea Immovilli (relay)
Course Setter: Alessio Tenani (sprint)
Emiliano Corona (relay)
Course controller: Marcello Lambertini (sprint)
Enrico Gottardo (relay)
Enrico Immovilli (relay)
Race office: Elena Lutaj
IT: Daniele Guardini
Speaker: Stefano Galletti



WITH THE TECHNICAL COLLABORATION OF:

**polisportiva
besanese**



Thanks to Municipio V of Genova Valpocevera
<https://smart.comune.genova.it/municipio5>



and Parrocchia di San Francesco d'Assisi in Bolzaneto
<https://www.facebook.com/sanfrancesco.allachiappetta>

ENTRIES

Until Monday 16th October.

Entry fees: 12 € sprint (7€ up to M/W16), 15 € relay (per person) (7€ up to M/W17).

WRE entries on Eventor: <https://eventor.orienteering.org/Events/Show/7724>

Relay and other foreign competitors by email to entries@woc2026.it

SPECIAL OFFER

Those who register for both competitions will receive a 5 € discount voucher valid for the 3 Days of the Apennines in 2024

PAYMENT

All entries must be paid in advance with a bank transfer, one for the entire club. Summary of fees for each club will be upload online after the entries deadline, please wait and check the amount before payment.

Please note that we will accept payments only in euro currency.

Payee	COMITATO GENOVA 2026 A.S.D.
Currency	Euro
IBAN	IT55E0538701411000003861810
BIC	BPMOIT22XXX
Bank	BPER Banca
Address of the bank	Agenzia 11 - GENOVA

PUNCHING SYSTEM

The punching system used is SPORTident SIAC Air+. You can hire Sport-Ident (no Air+) for 2 € a day.

BIBS

Bibs will be provided at the race office, one bib for both competitions.

GPS

The list of competitors that will use live GPS will be communicated.

PRIZE GIVING CEREMONY

Top 3 for all competitive classes will be rewarded, only winners for classes AK and OPEN (relay) and B (sprint).

In the WRE race, the top 6 elite competitors will be awarded prizes.

There will be a prize for all under 10 competitors. No prizes for classes Beginners, Verde and Direct.

REFRESHMENT

Water will be provided at the end of the race, please keep your own bottle/cup.

LIVELOX

You can add your track on Livelox.

ACCOMMODATION

All athletes, coaches and team member that could be involved in OWC 2024 and WOC 2026 must respect [the embargoed area](#), please pay attention when booking your accommodation.

For any question write to accommodations@woc2026.it

It will be possible to stay overnight with campers in a parking area in Piani di Praglia, exact place will be pointed in Bulletin 2 few days before races.

You can find some suggestion of accommodation on the website: <https://woc2026.com/offers-bb/>.

ITALIAN CUP SPRINT DISTANCE

Event organized with the patronage of Comune di Genova.



COMUNE DI GENOVA

ARENA

Genova Bolzaneto, piazza Riccardo Rissotto.

[44.458661, 8.901441](#)

SEE MAP IN THE NEXT PAGE

In the arena it is not allowed to leave bags and backpack, they must be stored at the race office (follow signals).

WC available, no showers.

PARKING

SEE MAP IN THE NEXT PAGE

From the Motorway Exit of Genova Bolzaneto please follow directions from the map. East of the river it is allowed to park only in the two pointed parking, West of the river there are many parking places. Parking is free.

The only allowed access to the race office and arena is from the bridge pointed in the map (Ponte S. Francesco).

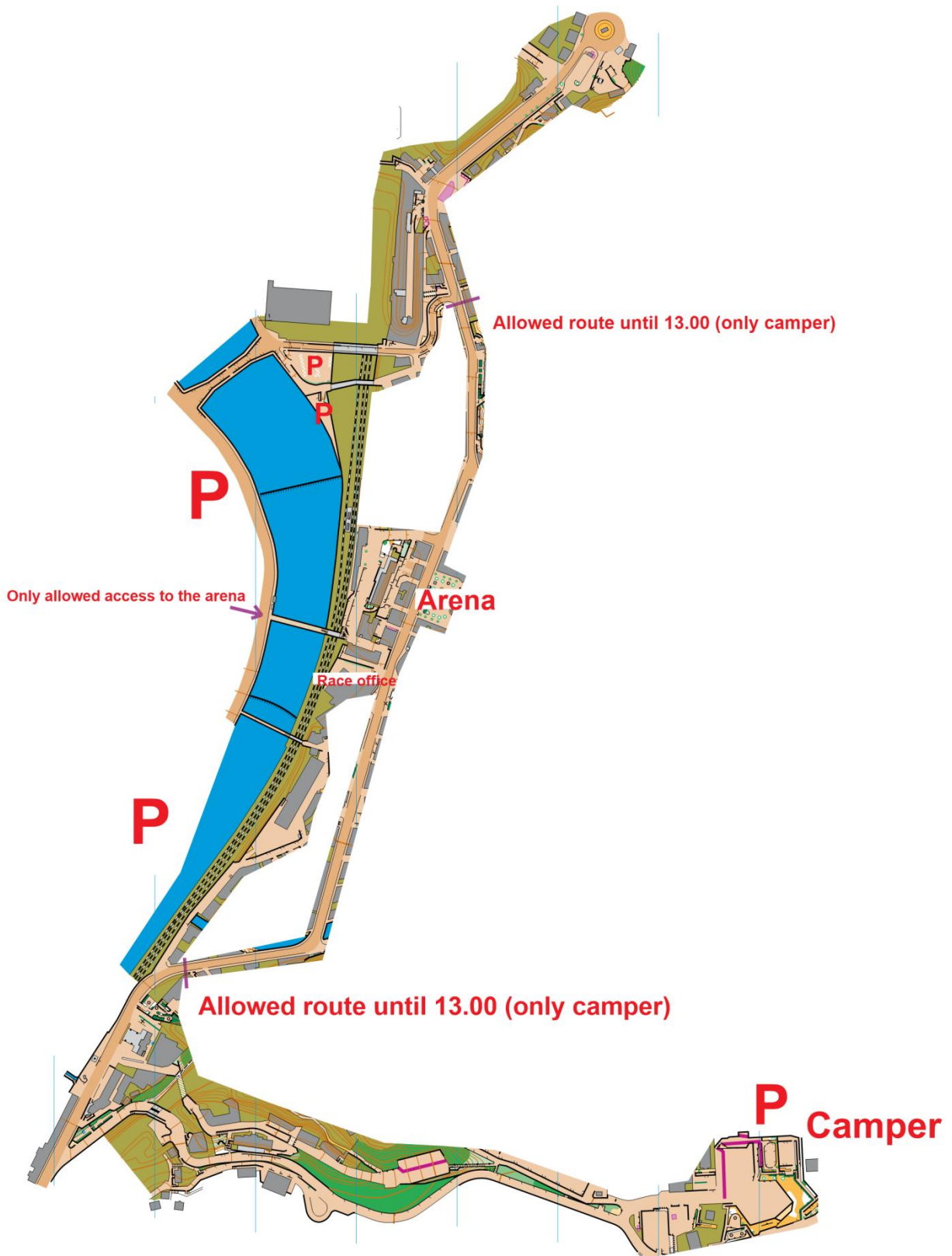
Parking for campers is at PalaDiamante, via Felice Maritano 36 ([44.452262, 8.905144](#)). It is allowed to drive to the parking on the main road only until 1 pm. Follow signals (white/orange tape) from the parking to the arena , or you can use a shuttle bus asking in advance at info@woc2026.it.

EMBARGO

The embargoed area is available [here](#).

The day of the race it is completely forbidden to enter it, with the exception of the roads to access the parking and the arena (see map).

Motorway Exit Genova Bolzaneto



CLASSES

Competitive classes:

M/W12, M/W-14, M/W-16, M/W-18, M/W-20, M/W Elite, M/W B, M/W35+, M/W40+, M/W45+, M/W50+, M/W55+, M/W60+, M/W65+, M/W70+, M/W75+

Non competitive classes:

M/W10, BEGINNERS, DIRECT

MAP



Genova Bolzaneto, scale 1:4000, eq. 2,5 m.
2023, S. Curzio.

A4 format; water resistant paper.



TERRAIN

Urban area with irregular road plan and parks; presence of some steep slopes.

LENGHTS

<i>Class</i>	<i>Length</i>	<i>Climbing</i>	<i>n. of controls</i>	<i>Class</i>	<i>Length</i>	<i>Climbing</i>	<i>n. of controls</i>
M10	1230	10	15	W10	1230	10	15
M12	1780	10	16	W12	1780	10	16
M14	1950	10	15	W14	1950	10	15
M16	2280	45	16	W16	2300	10	16
M18	3170	90	18	W18	2460	45	18
M20	3170	90	18	W20	2460	45	18
ME	3700	100	25	WE	3300	90	20
MB	2300	10	16	WB	1950	10	15
M35	3170	90	18	W35	2460	45	18
M40	3170	90	18	W40	2460	45	18
M45	2670	45	16	W45	2780	25	14
M50	2670	45	16	W50	2780	25	14
M55	2280	45	16	W55	2140	10	16
M60	2280	45	16	W60	2140	10	16
M65	2140	10	16	W65	2330	10	16
M70	2140	10	16	W70	2330	10	16
M75	2140	10	16	W75	2330	10	16
DIRECT	2780	25	14	ESO	1780	10	16

START

Start is in the nearby of the arena, more information in Bulletin 2. Entrance in the start procedure at -3.

MAXIMUM TIME

The maximum time allowed is set at 1h, and in any case, not less than twice the time of the winner.

RESULTS

Live result on Oribos Live and Liveresultat.

COMPLAINTS

Complaints should be addressed to the Race Director, who will handle them in accordance with paragraph 3.7.7 of the FISO RTF. Complaints presented after half an hour from the publication of the official rankings cannot be accepted. The race jury will be announced through a special notice.

ITALIAN RELAY CHAMPIONSHIPS

Event organized with the collaboration of Comune di Ceranesi.



ARENA

Piani di Praglia (Ceranesi)
44.51700, 8.80417

WC available, no showers.
Bar service at the arena.

Due to the swine fever epidemic, specific precautions will be necessary (e.g., changing shoes upon exiting the competition arena and whenever coming from non-paved areas). The details will be provided in a separate note, which will be published after the next meeting with the relevant authorities.

PARKING

Near the arena, there are only 60 parking spaces available. All other vehicles will be directed to parking lots P2 and P3, which are located 1.2 km and 1.5 km from the arena, respectively (parking lot P3 is mainly reserved for campers). There is also a parking lot P4 located 2 km from the arena, where there are a few spaces available for tourist buses. A free shuttle service will be organized from the parking lots to the meeting point.

Additionally, it is possible to park along the provincial road in designated pull-off areas to ensure that the vehicle is off the road.

EMBARGO

Embargoed area can be consulted [here](#).

[Here](#) you can find the old map of the race's area.

CLASSES

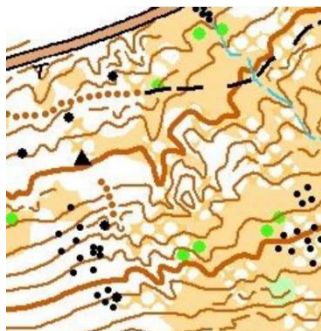
Competitive classes, 3 legs relay:

M/W-13, M/W-17, M/W-20, M/W Elite, M/W35+, M/W45+, M/W55+, M/W65+ (2 legs),
M/W AK, OPEN

Non competitive classes, individual race:
M/W10, DIRECT, VERDE ed BEGINNERS

Relay teams composed of athletes from different clubs are allowed in every classes, and they will not compete for the title.

MAP



Piani di Praglia, scale 1:10000, eq. 5 m.
2023, F. Buselli.

A4 format; water resistant paper.



TERRAIN

Predominantly open field with rocky slopes, deep valleys and many contours features

LENGTHS

<i>Class</i>	<i>Length</i>	<i>Climbing</i>	<i>n. of controls</i>	<i>Class</i>	<i>Length</i>	<i>Climbing</i>	<i>n. of controls</i>
M10	2620	105	11	W10	2620	105	11
M13	3000	110	10	W13	3000	110	10
M17	3650	180	12-13	W17	3050	125	10-11
M20	4400-4600	220-250	14-17	W20	3400-3600	160-180	11-14
ME	5300-5900	310-340	16-18	WE	4400-4600	250-270	13-15
MAK	4020	205	14-15	WAK	3040	175	11-12
M35	4450	260	12-13	W35	3600	190	12
M45	3700	190	14	W45	3140	180	11-12
M55	3060	140	10-11	W55	2800	120	8
M65	2900	125	10	W65	2660	100	8
OPEN	2710	125	9	ESO	2620	105	11
DIRECT	3320	145	12	VERDE	2600	95	10

CHANGES

Any changes in the composition of relay teams must be communicated by 8:00 PM on Saturday, October 21st, via email to entries@woc2026.it or at the race office.

In case of changes to the order of the relay legs, after approval, the athletes must exchange their bib numbers (the first leg runner must wear bib number 1XXX, the second leg runner with 2XXX, and the third leg runner with 3XXX).

START

The start is into the arena, and the technical bulletin will provide the starting times for each class (starting from 10:00 AM). Before the start, there will be a demonstration of the exchange procedure.

MAXIMUM TIME

The maximum time allowed for each competitor is set at 1h30', and in any case, not less than twice the time of the winner.

RESULTS

Live result on Oribos Live and Liveresultat.

In relays where there are mass starts for later legs, the sum of the individual times of the team members determines the placings of the teams that have taken part in such mass starts. Teams taking part in mass starts for later legs are placed after all teams which have changed over and finished in the ordinary way.

COMPLAINTS

Complaints should be addressed to the Race Director, who will handle them in accordance with paragraph 3.7.7 of the FISO RTF. Complaints presented after half an hour from the publication of the official rankings cannot be accepted. The race jury will be announced through a special notice.