

Relay of the Dolomites 2023

7th edition

Bulletin 2

20-21 May 2023, Falzes - Alto Adige/South Tirol, ITALY

www.relay-dolomites.com

We are excited to welcome you to the seventh edition of this spectacular orienteering relay!
The competition has a unique and thrilling race formula based on club spirit.

Venue

The competition venue is a nice pine forests of Falzes in beautiful Val Pusteria near to Brunico. Falzes lies northwest of Brunico and is considered one of the five sunniest villages in Val Pusteria!

Program

Friday, 19th May 2023, training

4.00-18.00 training opportunity, Grimaldo/Falzes, parking GPS 46.811263, 11.906363

Punching system SportIdent Air+

There will be two courses:

Short 2,6km, 60m, 8 controls

Long 3,7km, 110m, 13 controls

Entries by email relay-dolomites@tolweb.net or directly on place

Price 5,00€

Saturday, 20th May 2023, Regional Championships, Middle

Info and entry: <https://www.fiso.it/gara/2023104>

Arena – Sportcenter Falzes

Parking is in industry zone of Falzes GPS 46.812091, 11.894530

15.00 First start

18.00 Prize-giving ceremony

Sunday, 21st May 2023, Relay of the Dolomites

Arena – Sportcenter Falzes

Parking is in industry zone of Falzes GPS 46.812091, 11.894530

7.30 Competition office open

8.45 Deadline for team changes

9.30 Start "Relay of the Dolomites" Open

9.40 Start "Relay of the Dolomites" Women

9.50 Start "Kids Relay"

11.30 Restart of second and third not yet started legs. Mass-start of individual athletes

11.49 Finish first team WOMEN

12.33 Finish first team OPEN

13.30 Restart of all not yet started legs

15.00 Prize-giving ceremony

Relay OPEN (Start 9.30)

	Classes	Length	Difficulty	Winning time	Change over
1 leg	open	6,9km	difficult	38 min	10:08
2 leg	open	3,7km	medium	23 min	10:31
3 leg	open	4,2km	medium	26 min	10:57
4 leg	open	6,9km	difficult	38 min	11:35
5 leg	open	10,5km	difficult	58 min	12:33

Relay WOMEN (Start 9.40)

	Classes	Length	Difficulty	Winning time	Change over
1 leg	open	4,3km	difficult	30 min	10:10
2 leg	open	3,3km	medium	24 min	10:34
3 leg	open	4,3km	difficult	30 min	11:04
4 leg	open	6,5km	difficult	45 min	11:49

Runners from different clubs are allowed to run together but as it is a club relay, it is strongly recommended to compose club teams!

Kids Relay (Start 9.50)

Normal two-legs relay. There will be two classes: Boys and Girls. The age is 10-14 years old (born 2009-2013). Each team consists of two athletes. The girls may participate in the boy's class.

Kids Boys

	Classes	Length	Difficulty	Winning time	Change over
1 leg	MW10-MW14	2,1km	easy	16 min	10:06
2 leg	MW10-MW14	2,4km	easy	18 min	10:24

Kids Girls

	Classes	Length	Difficulty	Winning time	Change over
1 leg	W10-W14	1,9km	easy	16 min	10:06
2 leg	W10-W14	2,3km	easy	18 min	10:24

Individual runners without team

Single runners have possibility to run one of two prepared courses: Short 3,3km or Long 6,8km. They are starting with the first restart at 11.30. Entries are possible via e-mail relay-dolomites@tolweb.net or at the arena until 10.00, specifying name, surname, class, club, date of birth, SI-chip number, course. The entry fee is 20,00 Euro.

Spectators control & forking

There will be a spectators control after 80-90% of the course for all legs. No spectator control in Kids Relay.

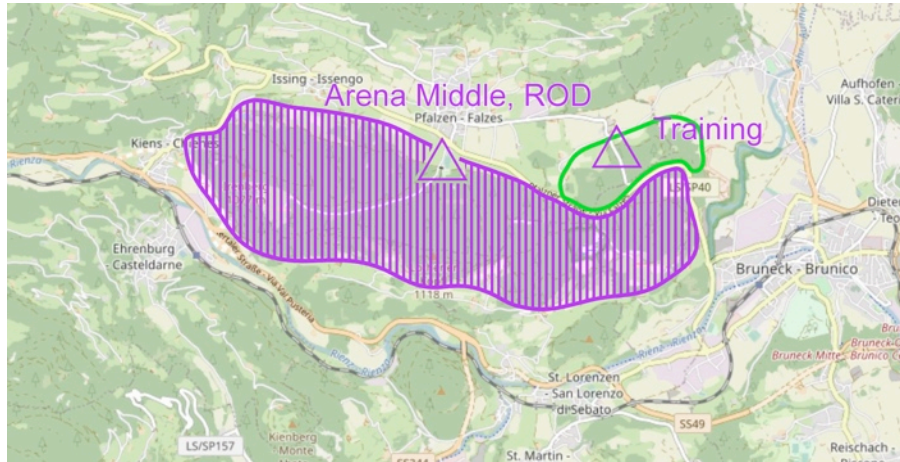
Forking will be used on all legs except of Women's 2nd leg.

King and Queen of the Hill

The best man and woman on the leg between spectator and following control marked on the map as K&Q will be crowned as "King and Queen of the hill". The leg is 270m long. The best three men and three women will be awarded.

Marlene
Sport & Freizeit

Overview map



Team formation changes

The team formation must be defined by Tuesday 16 May, midnight. Changes regarding the team formations can be done until Sunday 21 May, 08.45. Every change will be charged with a processing fee of 5,00 Euro.

Terrain

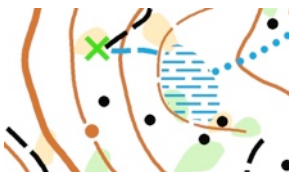
Orienteering terrain between 1000 and 1100m above sea level. Gentle slope covered with pine forest with high runnability and good visibility. Dense net of forest roads and paths with many stone features makes the area tricky and demanding.

Map

Scale 1:10.000, eqv. 5m for "Relay of the Dolomites".

Scale 1:7.500, eqv. 5m for "Kids Relay".

The map is new, produced in December 2022 by the mapmakers Viktor Kirianov and Vadym Prokopchuk. Maps printed on Pretex 120 gr/m2.





Team documents

The team envelopes contain number bibs, competition info, and small gadgets for all runners. For the first 30 teams the starting number corresponds to the placing of the team in ROD 2022. The team documents can be picked up Saturday during Middle or Sunday before Relay in the competition office at the arena.

Punching system

Touchfree SPORTident Air+ punching will be used. For those who do not possess SIAC Cards it will be possible to punch in the normal way.

It is possible to borrow SportIdent Cards for 2,00€

GPS

Live tracking will be used. On the 1st, 4th and 5th legs of Relay OPEN, 1st and 4th legs of Relay WOMEN the best teams will be asked to wear vests with a GPS unit. The teams will be announced by the speaker before and during the competition. Make sure to pick up your vest well in time. We ask the athletes if possible to use their own vests. Showing up at the start without GPS unit will lead to team disqualification.


Control descriptions

Control descriptions will be printed on the map. In some detailed areas the controls are set near to each other, please check the numbers! Near the control on the map will be printed number and control code, ex: 1-31

Start

Mass-start "Relay of the Dolomites" OPEN is at 9.30. The call-up is at -15 min before the mass start. Mass-start "Relay of the Dolomites" WOMEN is at 9.40. The call-up is suddenly after the start of Relay of the Dolomites.

Mass start "Kids Relay" is at 9.50. The runners are responsible to clear and check the SI card and to be at their positions 5 min before the start. It is forbidden to look at the map before the start signal.



Changeover procedure

The outgoing runner after check-in procedure receives rolled map with his bip-number on it. The incoming runner cross the finish line, punch the finish SI unit, leave his map in the container and continue towards his teammate. The change-over is done by hand touch across a separation barrier. The outgoing runner can open the map immediately after the change-over. If you encounter any problem at the changeover, please refer to our staff at the finish area.

Finish

The finish line decides the final position. Finish punching has to be done after the finish line. Get ready for tough fight!

Restart

At 11.30 mass-start of 2nd and 3d not yet started legs. Mass-start of individual athletes
At 13.30 mass-start for all other not yet started runners.

Map distribution

The distribution of the new maps will take place in the competition office after the last restart at 13.30

Results

You can follow online results here: <https://liveresultat.orientering.se/>

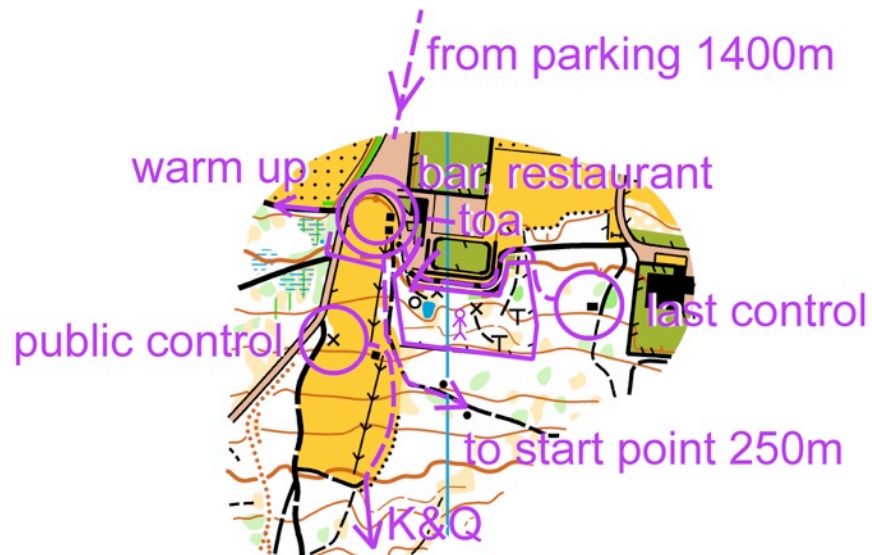



Parking

Parking is in industry zone of Falzes, 1400m from Arena: GPS 46.812091, 11.894530. No fee. To keep our nature green we recommend you to travel together and share the cars. Campers can park for free near to the main road (see the map below).



Arena





Prize-giving ceremony

The prize-giving ceremony takes place at the arena at 15.00. The first 6 teams of the Relay OPEN, the first 6 teams of the Relay WOMEN and the first 3 teams in both classes of the "Kids Relay" will be awarded. There will be a special award for the three best men and three best women on the leg "King and Queen of the hill".

Maximum time

The finish will be closed at 15.30, two hours after the second restart.

Restaurants

There will be a hamburger stand at the arena

Toilets

Toilets are available near the arena. It is strictly forbidden to use the toilets of the restaurant without buying drinks or food!

Entry

The entry is open from February 1st 2023 on our website: www.relay-dolomites.com

Entry fee:

- First deadline: 1st May 2023 (date within which the entry fee has to be paid, no names required)
100,00 Euro for Relay OPEN
80,00 Euro for Relay WOMEN
10,00 Euro for Kids Relay
- Second deadline: 15th May 2023 (date within which the entry fee has to be paid, no names required)
125,00 Euro for Relay OPEN
100,00 Euro for Relay WOMEN
12,00 Euro for Kids Relay

The deadline for the final entry with the athletes' names is Tuesday 16th May!





Bank data:

Amateursportverein T.O.L. Terlaner Orientierungsläufer

Raiffeisenkasse Etschtal Gen.

IBAN: IT45W0826958960000300210366

SWIFT BIC: RZSBIT21042

Runners bank

If you have difficulties to combine your own team you can contact the organisers and ask for help via e-mail: relay-dolomites@tolweb.net. Please provide the following data: name, surname, date of birth, gender, nation, SI-Card, e-mail, phone number, preferred leg. It will also be possible to start as a single runner with the restart at 11.30. The entry fee is 20,00 Euro.

Please use the Entry Form from www.relay-dolomites.com

Accommodation

There are many accommodation possibilities in Val Pusteria, please refer to <https://www.kronplatz.com>

Copyright pictures

With the entry to the "Relay of the Dolomites" the athlete gives the organization permission to take photographs of him/her and to use these photographs for marketing purposes.

Main officials

President of the OK	Ernesto Rampado
Event Director	Mikhail Mamleev
Secretary	Federica Ragona, Sabine Rottensteiner
Coursesetter	Dario Beltramba
Arena	Giuliano Rampado
Prize-giving	Verena Troi
SportIdent	Alessio Dalfollo, Fabio Marsoner
Diretta	Stefano Raus, Federico Bruni
Speaker	Stefano Galletti
Web, design	Klaus Schgaguler, Thomas Widmann
Social media	Giuliano Rampado, Sonia Rampado

Contacts

Email: relay-dolomites@tolweb.net Website: www.relay-dolomites.com



RELAY OF THE DOLOMITES IS



GEMEINDE PFALZEN

POWERED BY



FEDERAZIONE
ITALIANA
SPORT
ORIENTAMENTO

