



Città di Maniago
Città delle coltellerie



FEDERAZIONE
ITALIANA
SPORT
ORIENTAMENTO



Città di Spilimbergo
Città del mosaico

“FROM PESCHIERE TO TAGLIAMENTO RIVER” – 2 DAYS OF MTB-ORIENTEERING

8th of OCTOBER 2022 – MTB-O Italian Championship Sprint Distance WRE

9th of OCTOBER 2022 – MTB-O Italian Championship Middle Distance WRE

9th of OCTOBER 2022 – Foot-O promotional FVG-O Tour 8th round 2022

BULLETIN N. 2



ORGANISATION

Event Organiser A.S.D. Semiperdo Orienteering Maniago
President: Giovanna De Masellis
IOF Advisor: Mario Ruggiero
Event Directors: Mauro Nardi and Nicola Pilotto
Mapmaker: Flavio Mattioni
Course setter: Clizia Zambiasi

Email: semiperdo.orienteeing@gmail.com

Website: www.semiperdo.it

ENTRIES

Accepted only online, within Monday the 3rd of October 2022:

WRE athletes: IOF eventor website <https://eventor.orienteeing.org/Events>

Italian athletes: FISO website https://www.fiso.it/gar_lista.php

Foreign athletes: <https://www.orienteeingonline.net/>

Entry fees

M/W 17 and younger: € 7,00

M/W20 and older: € 12,00

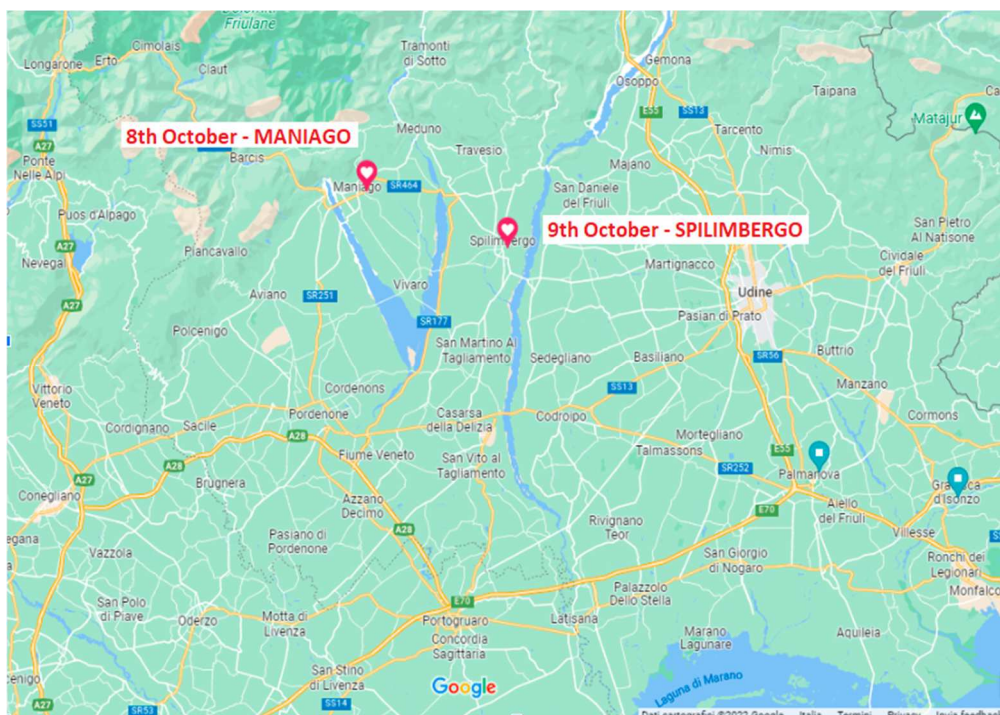
BEGINNERS, DIRECT: € 7,00

Bank account

Semiperdo Orienteering Maniago

Banca Popolare di Cividale

IBAN IT97 Z0548 46489 0CC0701000007





1. EVENT CENTER

“Area Violis”, via Tolmezzo 35, 33085 Maniago. [46.163593](#), [12.719038](#)

Event office opening at 14:00. At the event center it will be possible to buy sandwiches and drinks.

Parking: near the event center. Please follow the instruction given by organization staff.

2. RACE MAP

“Peschiere”, realised in 2022, scale 1:7.500, contour interval 5m.

Type of terrain: rural area with meadows, rows of trees and small groves.

3. START

First start: 15:30

Start point is 5’ away from event center (1,0 km)

4. FINISH

At “Parco della cultura e dell'arte fabbrile”, 1,0 km away from the event center.



5. CATEGORIES AND COURSE LENGTH

COURSE	LENGHT	CLIMB	
M12	3,1 km	10 m	
M14	5,2 km	20 m	
M17	8,1 km	30 m	
M20	9,2 km	30 m	
M Elite	9,2 km	30 m	
M40	7,7 km	30 m	
M50	7,7 km	30 m	
M60	7,3 km	20 m	
M70	5,2 km	20 m	
Beginners	4,9 km	20 m	Non competitive
Direct	5,2 km	20 m	Non competitive

COURSE	LENGHT	CLIMB
W12	3,1 km	10 m
W14	4,9 km	20 m
W17	5,2 km	20 m
W20	8,1 km	30 m
W Elite	8,1 km	30 m
W40	7,3 km	20 m
W50	7,3 km	20 m
W60	5,2 km	20 m

Merging categories: in case of a low number of entries, some of the planned categories could be deleted or merged.

6. TIME KEEPING

SPORTident AIR+. All SI-Cards can be used.

Final ranking online at <https://www.bostek.it/live/>

7. RACE JURY: The members of the jury will be sorted on the day of the race

8. PRIZE GIVING: Ceremony will start at 18:00 at the event center.



FARFALLI
CAVATAPPI D'AUTORE

9. PAY ATTENTION

- The race will develop mostly on gravel roads, but passages on smaller roads open to car are possible. Respect of the “rules of the road” is mandatory. Always keep the right side on the roads and paths.
- Riding on the main road is not allowed. This road has been crossed on the map with the proper symbol.
- The road crossing before the finish will be supervised by organization staff.
- Only certified helmets are allowed.
- We trust in the fair play of the participants. In case of unfair behavior, the athletes involved will be disqualified.

10. EMBARGOED AREA





1. EVENT CENTER

Parking area at “Stadio Comunale Giacomello”, 33097 Spilimbergo. [46.112815, 12.906799](#)
There it will be possible to buy sandwiches and drinks.

Event office is located in Piazza del Duomo under the loggia, 400mt from parking.
Event office opens at 8:30

2. RACE MAP

“Tagliamento” realised 2in 018, update 2022, scale 1:15.000 for M/W Elite and M/W20, 1:10:000 for all other categories, contour interval 5m.
Type of terrain: rural area with meadows, rows of trees and small groves.

3. START

First start: 10:00
Start point is 10’ from parking (1,5 km).

4. FINISH

In Piazza del Duomo, 400mt from parking area.



5. CATEGORIES AND COURSE LENGTH

COURSE	LENGHT	CLIMB
M12	5.5 km	30 m
M14	6.7 km	30 m
M17	11.3 km	40 m
M20	19.6 km	40 m
M Elite	23.3 km	90 m
M21B	11.3 km	40 m
M40	19.3 km	40 m
M50	19.3 km	40 m
M60	11.3 km	40 m
M70	9.3 km	30 m
Beginners	6.7 km	30 m
Direct	9.4 km	30 m

Non competitive

Non competitive

COURSE	LENGHT	CLIMB
W12	5.5 km	30 m
W14	6.7 km	30 m
W17	9.3 km	30 m
W20	11.3 km	40 m
W Elite	16.2 km	40 m
W21B	9.4 km	30 m
W40	11.3 km	40 m
W50	9.4 km	30 m
W60	9.3 km	30 m

Merging categories: in case of a low number of entries, some of the planned categories could be deleted or merged.

6. TIME KEEPING

SPORTident AIR+. All SI-Cards can be used.

Final ranking online at <https://www.bostek.it/live/>

7. RACE JURY: The members of the jury will be sorted on the day of the race.

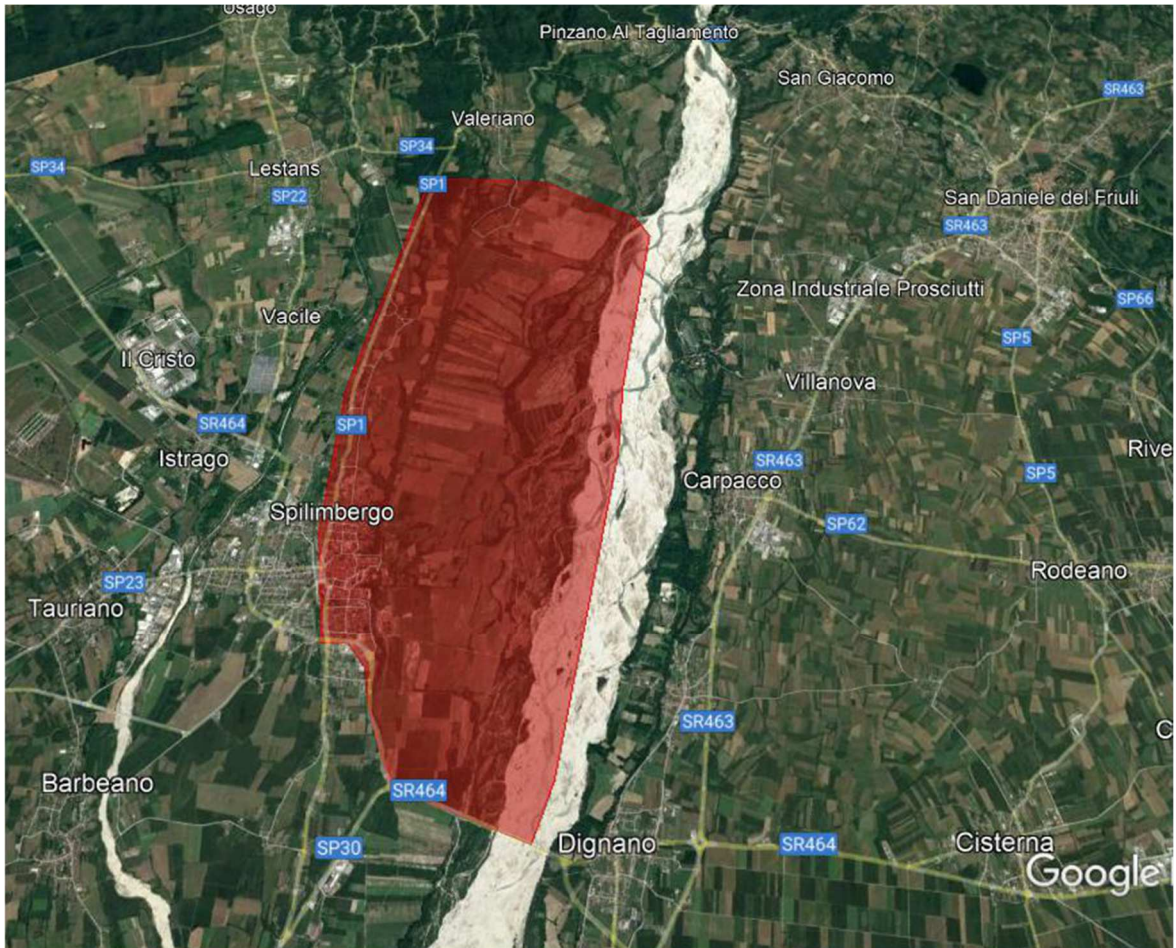
8. PRIZE GIVING

Ceremony will start at 14:00 at "Stadio Comunale Giacomello" near the parking.

9. PAY ATTENTION

- The race will develop mostly on gravel roads, but passages on smaller roads open to car are possible. Respect of the "rules of the road" is mandatory. Always keep the right side on the roads and paths
- Riding on the main road is not allowed. This road has been crossed on the map with the proper symbol.
- Only certified helmets are allowed.
- We trust in the fair play of the participants. In case of unfair behavior, the athletes involved will be disqualified.

10. EMBARGOED AREA





1. EVENT CENTER

Parking area at “Stadio Comunale Giacomello”, 33097 Spilimbergo. [46.112815, 12.906799](https://www.fiso.it/gara/2022260)
There it will be possible to buy sandwiches and drinks.
Event office is located in Piazza del Duomo under the loggia, 400mt from parking.
Event office opens at 8:30

2. ENTRIES

Online within Wednesday the 5th of October 2022

- Italian athletes on FISO website <https://www.fiso.it/gara/2022260>
- Others: send email to semiperdo.orienteeering@gmail.com

On Sunday the 9th of October 2022 up to 10:00 directly at the event center until printed maps expire.
Entry fees for all categories: € 5,00

3. RACE MAP

“Tagliamento” realised in 2018, update 2022, scale 1:5.000 for all categories, contour interval 5m
Type of terrain: rural area with meadows, rows of trees and small groves.

4. START

First start: 11:00

Start point is “Stadio Comunale Giacomello” near the parking area.

5. FINISH

In Piazza del Duomo, 400mt from parking.



6. CATEGORIES AND COURSE LENGTH

WHITE and GROUPS: 2,5 km

YELLOW: 3 km

RED: 4 km

BLACK: >5km

7. TIME KEEPING

SPORTident AIR+. All SI-Cards can be used.

Final ranking online at <https://www.bostek.it/live/>

8. PRICE GIVING

Ceremony will start at 14:00 at “Stadio Comunale Giacomello” near the parking.