



# SIBEN TrailO Cup

10-11 OCTOBER, 2020  
ASIAGO7COMUNI, ITALY (EU)  
WRE - ECTO - CHIS TrailO Cup



## BULLETIN 2

WRE - ECTO - CHIS TrailO Cup – Italy Cup

<http://www.asiago7comunisok.eu/sibentrailocup/>

### ORGANISING TEAM

<b>Chairman</b>	Galvan Nicola
<b>Event Director</b>	Tenani Alessio
<b>Course Planner</b>	Madella Remo, Tenani Alessio
<b>Map-maker</b>	Madella Remo

### EVENT ADVISERS

<b>Event Adviser and national controller</b>	Michelotti Giuliano
--	---------------------

### EVENT PROGRAMME

Detailed areas and locations: [http://bit.ly/ECTO\\_Asiago](http://bit.ly/ECTO_Asiago)

<b>Friday 09/10 (PM)</b>	Arrival Model - Hinterbech
<b>Saturday 10/10 11:00</b>	TempO - Cesuna
<b>Saturday 10/10 15:00</b>	PreO Sprint – Val di Nos
<b>Sunday 11/10 10:00</b>	PreO - Rogabisa Prize giving, Departure

### CLASSES AND COMPETITION RULES

Classes PreO: Elite (O - open, P - physically challenged, J - juniors), A Class.

Classes TempO: there is a only a single class (Open).

The Competition Rules for IOF Trail Orienteering Events valid in 2020 shall apply. Entries by IOF Eventor for WRE or [info@asiago7comunisok.eu](mailto:info@asiago7comunisok.eu).

### ENTRY FEES

TempO 15,00€, PreO Sprint 10,00€, PreO 15,00€. A Class 5,00€. All Event package 30,00€.

**ENTRIES CLOSING: 04/10**

### EVENT CENTER AND RECOMMENDED ACCOMMODATION



Reggenza  
7 COMUNI



Città di  
ASIAGO



Comune di  
GALLIO



Comune di  
ROANA



FEDERAZIONE  
ITALIANA  
SPORT  
ORIENTAMENTO



DISCIPLINA SPORTIVA  
ASSOCIATA  
ALCONI



Disciplina Sportiva  
Paralimpica riconosciuta dal  
Comitato Italiano Paralimpico



# SIBEN TrailO Cup

10-11 OCTOBER, 2020  
ASIAGO7 COMUNI, ITALY (EU)  
WRE - ECTO - CHISTrailO Cup



Col del Sole Hotel \*\*\*Superior  
Via Chiesa, 52 Treschè Conca di Roana  
Web: [coldelsole.it/en/](http://coldelsole.it/en/)

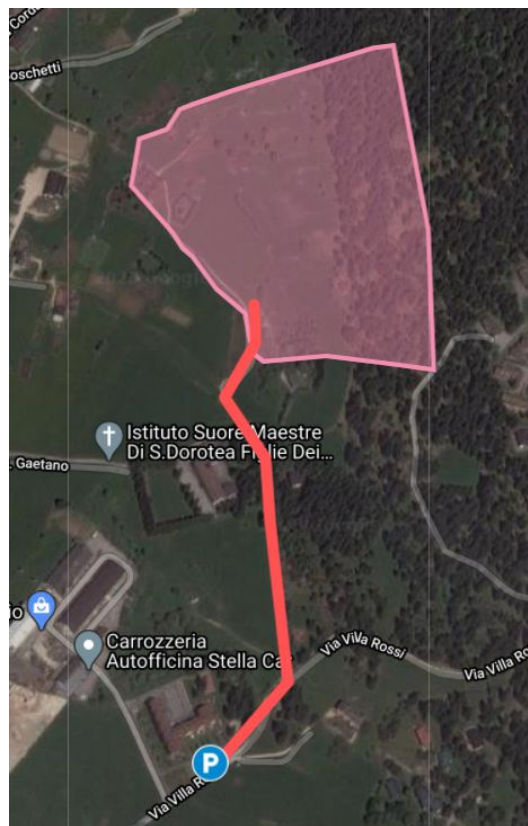
## TRAINING – PreO Sprint (no time controls)

Friday Oct9 3 PM – Saturday Oct10 7 PM

PARKING: 45.883545, 11.526784

START: 500m from PARKING

FINISH: 700m to PARKING



Hinterbech Ovest 1:4000 - 5m contours

First mapped 2014, as enlargement from ISOM – updated 2020 (and made to ISSprOM)

COURSE: 200 m – no climb – unpaved (good ridability); 14 controls

TIME LIMIT: 30 minutes

PUNCHING: manual (A control will not have viewing point)



Reggenza  
7 COMUNI



Città di  
ASIAGO



Comune di  
GALLIO



Comune di  
ROANA



FEDERAZIONE  
ITALIANA  
SPORT  
ORIENTAMENTO



DISCIPLINA SPORTIVA  
ASSOCIATA  
ALCONI



Disciplina Sportiva  
Paralimpica riconosciuta dal  
Comitato Italiano Paralimpico



# SIBEN TrailO Cup

10-11 OCTOBER, 2020  
ASIAGO 7 COMUNI, ITALY (EU)  
WRE - ECTO - CHISTrailO Cup



**ECTO – TempO** <https://eventor.orienteering.org/Events/Show/6688>

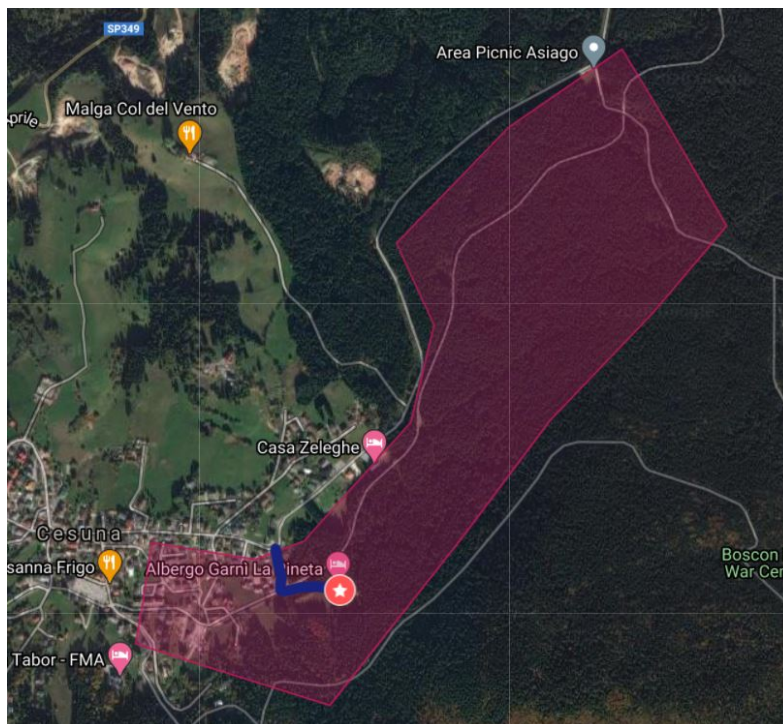
Saturday Oct10 11 AM

EVENT CENTER and PARKING: 45.836955, 11.463761 [lapinetacesuna.it](http://lapinetacesuna.it)

QUARANTINE at the event center – 10.40 AM strict

START: 0 m from EVENT CENTER

FINISH: 1500 m to EVENT CENTER



Cesuna – Pineta 1:4000 – 2.5m contours

New map 2020 (ISSprOM)

**COURSE:**

8 stations with 5 tasks each (made with TiM software, ANT will be used for measuring time)

Unpaved (good ridability)

Model station at the event center



Reggenza  
7 COMUNI



Città di  
ASIAGO



Comune di  
GALLIO



Comune di  
ROANA



FEDERAZIONE  
ITALIANA  
SPORT  
ORIENTAMENTO



DISCIPLINA SPORTIVA  
ASSOCIATA  
ALCONI



Disciplina Sportiva  
Paralimpica riconosciuta dal  
Comitato Italiano Paralimpico



# SIBEN TrailO Cup

10-11 OCTOBER, 2020  
ASIAGO7COMUNI, ITALY (EU)  
WRE - ECTO - CHISTrailO Cup



Beginners will use first 3 stations (starting after Elite competitors) + model station always available

## Coppa Italia – One man relay, Sprint <https://www.fiso.it/gara/202035>

Saturday Oct10 3 PM

EVENT CENTER and PARKING: 45.906075, 11.530478

START: 0 m from EVENT CENTER

FINISH: 200 m to EVENT CENTER



Val di Nos 1:4000 – 2.5m contours; New map 2020 (ISSprOM)

### COURSE:

3 TempO stations with 5 tasks each (2 before – 1 after PreO section)

15 PreO controls – 200 m



Reggenza  
7 COMUNI



Città di  
ASIAGO



Comune di  
GALLIO



Comune di  
ROANA



FEDERAZIONE  
ITALIANA  
SPORT  
ORIENTAMENTO



DISCIPLINA SPORTIVA  
ASSOCIATA  
ALCONI



Disciplina Sportiva  
Paralimpica riconosciuta dal  
Comitato Italiano Paralimpico



# SIBEN TrailO Cup

10-11 OCTOBER, 2020  
ASIAGO 7 COMUNI, ITALY (EU)  
WRE - ECTO - CHISTrailO Cup



Unpaved (medium ridability)  
Model station at the event center

TIME LIMIT for the PreO part:

Elite: 30 minutes

Physically challenged: 40 minutes

Beginners: 50 minutes

PUNCHING: by mobile phone due to the COVID protocols (more informations on next bulletin)

Note: in the arena there aren't facilities (no WC or restaurant). Don't come too early at the parking/start.

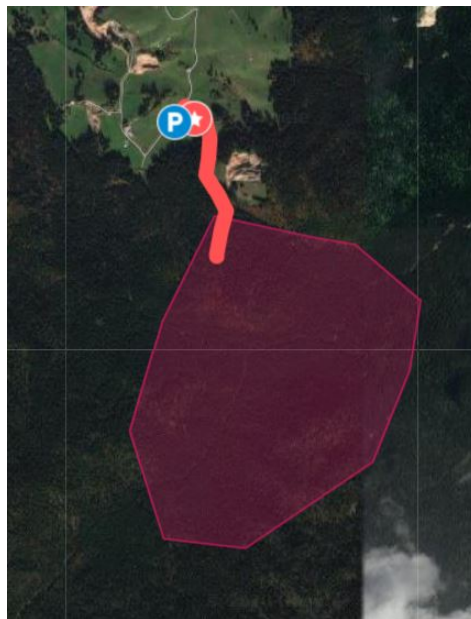
**ECTO – PreO <https://eventor.orienteering.org/Events/Show/6688>**

Sunday Oct11 10 AM

EVENT CENTER and PARKING: Museo dell'Acqua (45.839040, 11.498956)

START: 800m from EVENT CENTER (Physically challenged can park closer, more informations in bulletin 3)

FINISH: 1200 m to EVENT CENTER



Reggenza  
7 COMUNI



Città di  
ASIAGO



Comune di  
GALLIO



Comune di  
ROANA



FEDERAZIONE  
ITALIANA  
SPORT  
ORIENTAMENTO



DISCIPLINA SPORTIVA  
ASSOCIATA  
ALCONI



Disciplina Sportiva  
Paralimpica riconosciuta dal  
Comitato Italiano Paralimpico



# SIBEN TrailO Cup

10-11 OCTOBER, 2020  
ASIAGO 7 COMUNI, ITALY (EU)  
WRE - ECTO - CHISTrailO Cup



Map: Rogabisa 1:4000 – 2.5m contours  
New map 2020 (ISSprOM)

## COURSE:

25 PreO controls – 400 m

Unpaved (medium ridability)

2 Time controls with 3 tasks each after the finish

TIME LIMIT Elite: 87 minutes, Physically challenged 105'

PUNCHING: by mobile phone due to the COVID protocols (more informations in bulletin 3)

No beginners course



**Reggenza  
7 COMUNI**



**Città di  
ASIAGO**



**Comune di  
GALLIO**



**Comune di  
ROANA**



**FEDERAZIONE  
ITALIANA  
SPORT  
ORIENTAMENTO**



DISCIPLINA SPORTIVA  
ASSOCIATA  
ALCONI



Disciplina Sportiva  
Paralimpica riconosciuta dal  
Comitato Italiano Paralimpico