



GRUPPO SPORTIVO PAVIONE A.S.D.

Via Nazionale, 56/A

38050 IMER (TN)

Tel. 0439 1998468

info@gspavione.it; gspavione@pec.it

www.gspavione.it

C.F. 81006100226 - P.I. 01373560224 - S.I.D.: 0000000

Iban: IT94P0814034890000027111373

Reg. Coni: FISU 163958, FISO 16005, CSI 89398



CAMPIONATO ITALIANO SPRINT – SAN MARTINO DI CASTROZZA – 12 SEPTEMBER 2020

BULLETTIN N. 1

FOREWORD

In view of the restrictions caused by the COVID-19 problems, we trust in the awareness and collaboration of all for the best success of the event.

GENERAL HEALTH RULES COVID-19

The Technical Adviser or, in his absence, the Race Director has the authority to suspend the race and/or exclude persons from the race if the requirements for protection from infections are not respected. Body temperature will be measured to the participants during the path from the parking lot to the meeting place

PARTICIPANT'S DUTIES

In the competition arena it is forbidden to set up tents, gazebos or other equipment that could cause people assembling.

Bring all the water you need from home, as there are no refreshments.

Wear an appropriate face mask throughout the race arena (parking, departure area, arrival area and routes that connect the previously described areas) both before and after the race.

Bring home any waste, including bibs and masks used.

Respect of the interpersonal distance of 1 meter.

In the warm up phase, maintain the distance of 2 meters while running, keeping the same direction.

At the entrance of the start gate -3 sanitize your hands with the sanitizer dispenser.

At the start gate -1 you can remove the face mask

Immediately after arrival is mandatory to:

- leave the line of arrival immediately
- wear the mask
- throw the race map in the appropriate container
- to carry out the sanitization of the hands from special dispenser
- respect the interpersonal distance of 1m when approaching the downloading station
- quickly retract split times
- move quickly away from the race management area

Use toilets at the service of the bar following the instruction of the staff





GRUPPO SPORTIVO PAVIONE A.S.D.

Via Nazionale, 56/A

38050 IMER (TN)

Tel. 0439 1998468

info@gspavione.it; gspavione@pec.it

www.gspavione.it

C.F. 81006100226 - P.I. 01373560224 - S.I.D.: 0000000

Iban: IT94P0814034890000027111373

Reg. Coni: FIS1 163958, FISO 16005, CSI 89398



TECHNICAL INDICATIONS

In the team envelope, to be collected inside the Sport Center, the following will be available:

- single race-bib for both days (Saturday + Sunday)
- eventual SI Card to rent, differentiated by day
- race bulletin
- form of any changes to the SI Card

SIAC BATTERY CHECK will be available in the race arena.

For those who participate with the SIAC:

- At gate -3 make CLEAR
- At gate -2 check
- At gate -1 SIAC TEST

For those participating with classic SPORTIDENT:

- At gate -3 make CLEAR
- At gate -2 check

Any latecomers must report to the LATECOMERS gate next to gate -3 and follow the instructions of the attendant

Unofficial and official results on <https://liveresultat.orientering.se/> .

In the competition arena there will be QRcodes available to connect.

Awards will be given only to the ELITE classes, for the top 5 runners.

Awards of all the other categories will take place by sending to the teams the respectively won medals.

The race map is in A4 format on blue back paper, made in 2020 according to ISSprOM 2019 symbols, scale 1:4000, eq. 2,5m

The control description is printed only on the race map.

Maps shall deposited after arrival.

At the end of the race at the secretariat inside the Sport Center, after the announcement of the speaker, an envelope with a new copy of the race map for each registered competitor will be delivered to each team representative.

WARM UP AREA: Warm up will be possible on the asphalt road that leads to Malga Ces, north/north-west of the arena, as well as on the road to the start. See attached picture.

START: There will be two different starts:

P1 - (510m from the arena): ESORDIENTI BIANCO, M12, M14, M16, M Elite, MB, M35+, M40+, M60+, W12, W Elite, W45+, W50+, W55+

P2 - (490m from the arena): ESORDIENTI GIALLO, M18, M20, M45+, M50+, M55+, M65+, M70+, M75+, W14, W16, W18, W20, WB, W35+, W40+, W60+, W65+, W70+, W75+





GRUPPO SPORTIVO PAVIONE A.S.D.

Via Nazionale, 56/A

38050 IMER (TN)

Tel. 0439 1998468

info@gspavione.it; gspavione@pec.it

www.gspavione.it

C.F. 81006100226 - P.I. 01373560224 - S.I.D.: 0000000

Iban: IT94P0814034890000027111373

Reg. Coni: FIS1 163958, FISO 16005, CSI 89398



FINISH: to favour interpersonal distancing, there will be two different “last control”, numbered 100 and 125. Pay attention to follow the right finish corridor into the finish line.

COURSE: Pay attention to traffic in the village which, although limited, is open. The traffic that descends from Passo Rolle to Primiero will be diverted to a single road, which is not crossed, but potentially bordered, by courses.

The race terrain is 80% asphalt, 20% lawn. Some grassy ramps are however particularly slippery.

It is recommended to respect the symbology ISSprOM 2019 in the prohibition of crossing certain areas and objects. There will be manned patrols along the courses.

In the final part of the race, some walls marked as not crossable on paper, have variable height dimensions, from 2 to 0 meters. Where unclear, they will be marked on the ground with red and white tape and considered not possible to be crossed; violation of this rule will lead to disqualification. (SEE PHOTO)





GRUPPO SPORTIVO PAVIONE A.S.D.

Via Nazionale, 56/A

38050 IMER (TN)

Tel. 0439 1998468

info@gspavione.it; gspavione@pec.it

www.gspavione.it

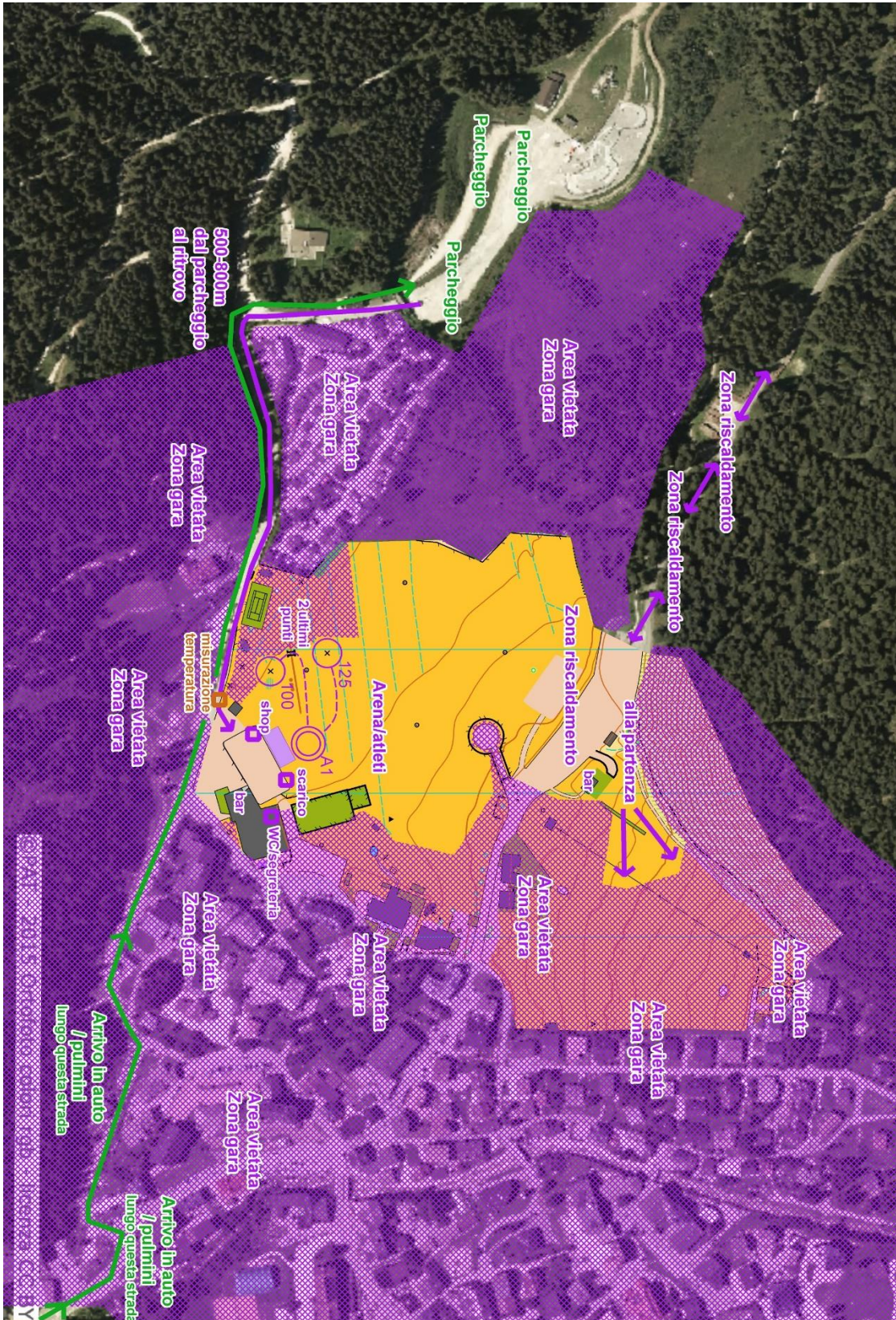
C.F. 81006100226 - P.I. 01373560224 - S.I.D.: 0000000

Iban: IT94P0814034890000027111373

Reg. Coni: FISU 163958, FISO 16005, CSI 89398



ARENA OVERVIEW:



**GRUPPO SPORTIVO PAVIONE A.S.D.**

Via Nazionale, 56/A

38050 IMER (TN)

Tel. 0439 1998468

info@gspavione.it; gspavione@pec.it

www.gspavione.it

C.F. 81006100226 - P.I. 01373560224 - S.I.D.: 0000000

Iban: IT94P0814034890000027111373

Reg. Coni: FIS1 163958, FISO 16005, CSI 89398

**COURSES LENGTHS AND START POINTS:**

CLASS	LENGHT	CLIMB	Δ
-------	--------	-------	---

ESO CORTO	1550	10	P1
M-12	1900	35	P1
M-14	2700	45	P1
M-16	3250	60	P1
M-18	3400	70	P2
M-20	3400	70	P2
M Elite	4000	85	P1
MB	2200	35	P1
M35+	3250	60	P1
M40+	3150	65	P1
M45+	2950	55	P2
M50+	2950	55	P2
M55+	2800	50	P2
M60+	2700	45	P1
M65+	2200	35	P2
M70+	2200	35	P2
M75+	1900	40	P2

CLASS	LENGHT	CLIMB	Δ
-------	--------	-------	---

ESO LUNGO	2850	50	P2
W-12	1900	35	P1
W-14	2400	40	P2
W-16	2800	50	P2
W-18	2850	50	P2
W-20	2850	50	P2
W Elite	3150	65	P1
WB	1900	40	P2
W35+	2400	40	P2
W40+	2400	40	P2
W45+	2200	35	P1
W50 +	2200	35	P1
W55 +	2200	35	P1
W60+	2200	35	P2
W65+	1900	40	P2
W70+	1900	40	P2
W75+	1900	40	P2

RACE JURY:

ELENA POLI

PAOLO DISSETTE

FABIO HUELLER

Reserve: Francesco Bazan - Ivano Benini