



**ORIENTEERING PERGINE**  
 Associazione Sportiva Dilettantistica  
 Iscritta al Registro CONI al n.10.651

## Caratteristiche dei percorsi

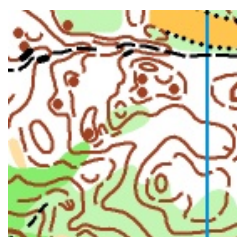
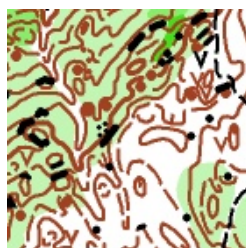
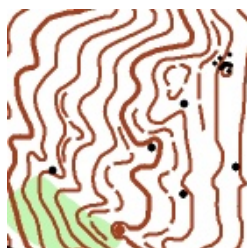
### GARA PERGINE Sprint lunga

M12	1820 (2100)	38
M-14	1820 (2100)	38
M-16	2330 (3000)	110
M-18	2740 (3470)	112
MA	3330 (4200)	140
MB	2330 (3000)	110
M35	3330 (4200)	140
M45	2890 (3854)	130
M55	2740 (3470)	112
M65	2330 (3000)	110
DIR	2740 (3470)	112
ESO	1540 (1820)	20
W12	1540 (1820)	20
W-14	1540 (1820)	20
W-16	2070 (2700)	85
W-18	2330 (3000)	110
WA	2890 (3854)	130
WB	2070 (2700)	85
W35	2890 (3854)	130
W45	2740 (3470)	112
W55	2330 (3000)	110
W65	2070 (2700)	85

### GARA PRAMARQUART middle

2560	100
2800	110
2410	95
3340	145
4260	230
2550	110
3770	215
3340	145
3270	145
2550	140
3340	145
2560	100
2560	100
2800	110
2750	120
3270	145
3770	215
2410	95
3270	145
2550	110
2410	95
2750	120

### Francobolli cartina Pramarquart



Via Canopi, 1 – 38057 PERGINE VALSUGANA (TN)

tel. 0461 533562 e-mail [oripergine@tiscali.it](mailto:oripergine@tiscali.it) p.ta iva 01877150225 c.f. 96003540224