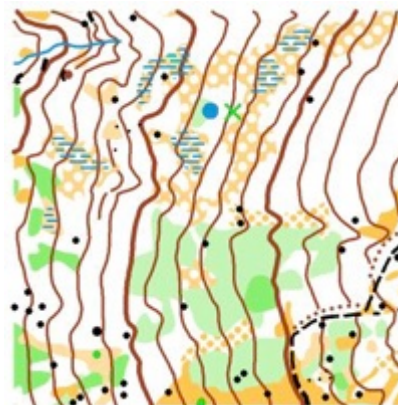


5 DAYS DOLOMITEN'S ORIENTEERING TOUR 2015

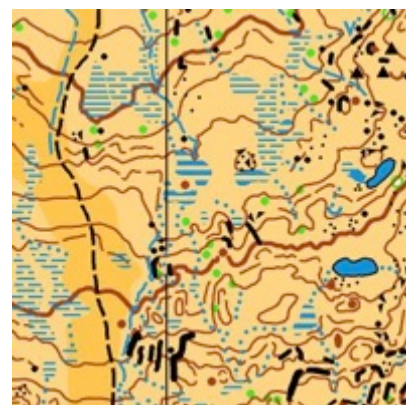
Stage 1 - Sunday, July 12th

Map: Castellir
 Realized: 2011
 Map scale: 1 : 10.000 (enlarged from 1:15.000)
 Contours: 5 m
 Description: Castellir map has been used for Italian Championship in 2011 both for Long distance and Relay.
 Terrain: Open land with scattered trees, and forest with mainly coniferous woods; rock and contours details are frequent in some areas; few paths. Good runnability and visibility.
 Altitude: 1400m-2000m above sea level



Stage 2 - Monday, July 13th

Map: Alpe Tognola
 Realized: 2014
 Map scale: 1 : 7.500
 Contours: 5 m
 Description: Alpe Tognola is on the top of a mountain plateau over the famous tourist center of San Martino di Castrozza. It's a beautiful window in front of the Pale di San Martino in the natural park of Paneveggio e Pale di San Martino.
 Terrain: Typical alpine open terrain. Plenty of rock and contour details. Mixed runnability from good to very slow (due to undergrowth and rocky terrain).
 Altitude: 1900m-2200m above sea level



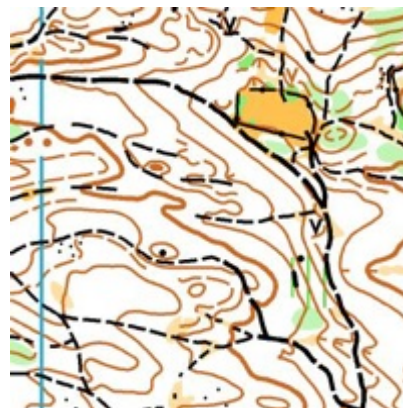
Stage 3 - Tuesday, July 14th

Map: Ziano
 Realized: 2013
 Map scale: 1 : 5.000 (ISSOM rules)
 Contours: 2.5 m
 Description: Mountain village with some old buildings and narrow passageways, surrounded by fields.
 Terrain: Many man-made features and little contour detail. Very good to excellent runnability. Mix of roads and hard surfaces and grass.
 Altitude: 950m-1100m above sea level



Stage 4 - Thursday, July 16th

Map: Lavarone Nord
 Realized: 2014
 Map scale: 1 : 10.000 (enlarged from 1:15.000)
 Contours: 5 m
 Description: WOC 2014 Long distance final was held in the hills and valleys of Lavarone last year.
 Terrain: Mix of alpine, pine, spruce and beech forest. The terrain is a mix of areas with good visibility, forest with good running condition, and areas where vegetation is more dense and running speed is reduced.
 Altitude: 1100m-1400m above sea level



Stage 5 - Friday, July 17th

Map: Bellamonte Sud
 Realized: 2011
 Map scale: 1 : 10.000 (enlarged from 1:15.000)
 Contours: 5 m
 Description: Bellamonte is an old Italian map numbered CO 3, the first version dates 1982 and began a long tradition for orienteering in the area.
 Terrain: Open forest with mainly coniferous woods (spruce); rock and contours details are present; as well as some marshes and paths. Quite good runnability and visibility.
 Altitude: 1300m-1500m above sea level

